

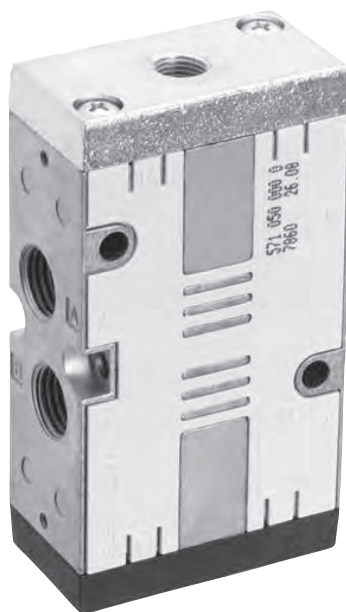
AVENTICS®

Directional valves ► Pneumatically operated

Series CD07







Brochure

Rexroth
Pneumatics







Directional valves ► Pneumatically operated


Series CD07

	2/2-directional valve, Series CD07 ► Qn = 1400 l/min ► pipe connection ► compressed air connection output: M14x1,5 ► suitable for ATEX	4
	3/2-directional valve, Series CD07 ► Qn = 1400 l/min ► pipe connection ► compressed air connection output: G 1/4 ► suitable for ATEX	6
	3/2-directional valve, Series CD07 ► Qn = 1400 l/min ► pipe connection ► compressed air connection output: M14x1,5 ► suitable for ATEX	8
	5/2-directional valve, Series CD07 ► Qn = 1200 l/min ► pipe connection ► compressed air connection output: G 1/4 ► suitable for ATEX	10
	5/2-directional valve, Series CD07 ► Qn = 1200 l/min ► pipe connection ► compressed air connection output: M14x1,5 ► suitable for ATEX	12
	5/2-directional valve, Series CD07 ► cold-resistant ► Qn = 1200 l/min ► pipe connection ► compressed air connection output: G 1/4 ► suitable for ATEX	14
	5/3-directional valve, Series CD07 ► Qn = 880 - 1070 l/min ► pipe connection ► compressed air connection output: G 1/4 ► suitable for ATEX	16
	5/3-directional valve, Series CD07 ► Qn = 900 - 960 l/min ► pipe connection ► compressed air connection output: M14x1,5 ► suitable for ATEX	18

Accessories

	P-manifold ► for series CD07, 5/2 and 5/3-directional valves	20
	R, P, S subbase, Series CD07	21
	Accessories, Series CD07	23
	Blanking plate, for series CD07	23

Directional valves ► Pneumatically operated
Series CD07

	Silencers, Series SI1 ► Sintered bronze	24
	Silencers, Series SI1 ► Sintered bronze	25
	Silencers, Series SI1 ► Sintered bronze	26
	Silencers, Series SI1 ► Polyethylene	27

2/2-directional valve, Series CD07

▶ Qn = 1400 l/min ▶ pipe connection ▶ compressed air connection output: M14x1,5 ▶ suitable for ATEX



Version	Spool valve, zero overlap
Sealing principle	Soft sealing
Working pressure min./max.	-0.95 bar / 10 bar
Control pressure min./max.	2.5 bar / 10 bar
Ambient temperature min./max.	-25 °C / +80 °C
Medium temperature min./max.	-25 °C / +80 °C
Medium	Compressed air
Max. particle size	50 µm
Oil content of compressed air	0 mg/m³ - 1 mg/m³
Materials:	
Housing	Die cast zinc
Seals	Acrylonitrile Butadiene Rubber

Technical Remarks
<ul style="list-style-type: none"> ■ The min. control pressure must be adhered to, since otherwise faulty switching and valve failure may result! ■ The pressure dew point must be at least 15 °C under ambient and medium temperature and may not exceed 3 °C. ■ The oil content of compressed air must remain constant during the life cycle. ■ Use only the approved oils from AVENTICS, see chapter „Technical information“.

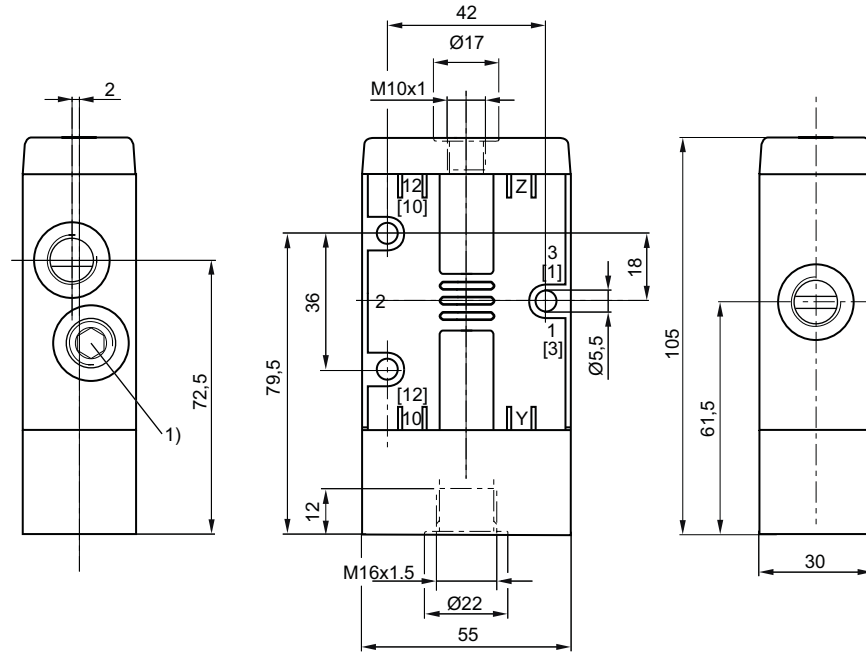
		Compressed air connection			Flow rate value		
		Input	Output	Pilot connection	Qn 1▶2	Weight	Part No.
					[l/min]	[kg]	
	NO	M14x1,5	M14x1,5	M10x1, M16x1	1400	0.4	5710409000
Nominal flow Qn at 6 bar and Δp = 1 bar Nominal flow Qn (1▶2) can be throttled up to 100 l/min.							

Directional valves ► Pneumatically operated

2/2-directional valve, Series CD07

► Qn = 1400 l/min ► pipe connection ► compressed air connection output: M14x1,5 ► suitable for ATEX

Dimensions



00135744

1) Blanking screw

3/2-directional valve, Series CD07
► Qn = 1400 l/min ► pipe connection ► compressed air connection output: G 1/4 ► suitable for ATEX


00134148

Version	Spool valve, zero overlap
Sealing principle	Soft sealing
Working pressure min./max.	-0.95 bar / 10 bar
Control pressure min./max.	See table below
Ambient temperature min./max.	-25 °C / +80 °C
Medium temperature min./max.	-25 °C / +80 °C
Medium	Compressed air
Max. particle size	50 µm
Oil content of compressed air	0 mg/m³ - 1 mg/m³
Compressed air connection	according to ISO 228-1
Materials:	
Housing	Die cast zinc
Seals	Acrylonitrile Butadiene Rubber

Technical Remarks

- The min. control pressure must be adhered to, since otherwise faulty switching and valve failure may result!
- The pressure dew point must be at least 15 °C under ambient and medium temperature and may not exceed 3 °C.
- The oil content of compressed air must remain constant during the life cycle.
- Use only the approved oils from AVENTICS, see chapter „Technical information“.
- option valve: The input and output compressed air connections can be exchanged. The valve can thereby be used in the NC or NO operating mode.

		Compressed air connection				Flow rate value	Control pressure min./max.	Weight	Part No.
		Input	Output	Exhaust	Pilot connection	Qn			
						[l/min]	[bar]	[kg]	
	NO/NC	G 1/4	G 1/4	G 1/4	G 1/8	1400	3 / 10	0.4	5710400100
	NO/NC	G 1/4	G 1/4	G 1/4	G 1/8	1400	2 / 10	0.4	5710401100

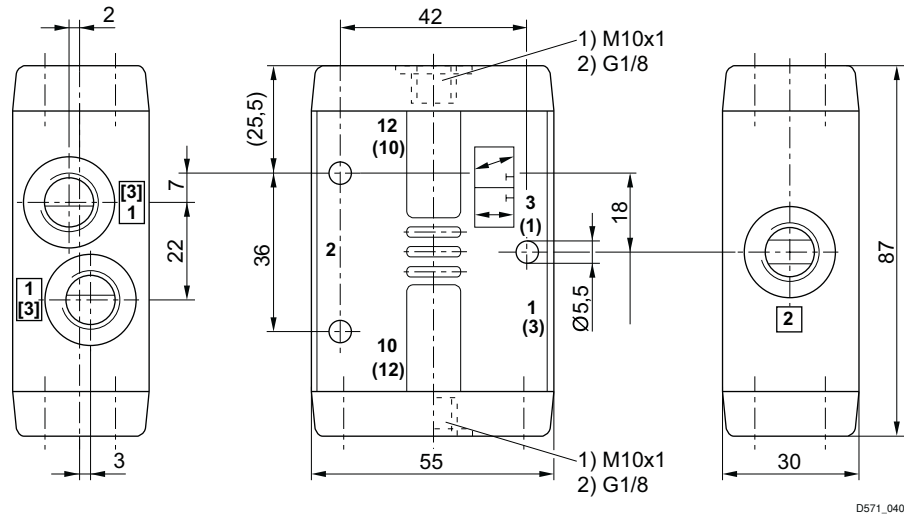
Nominal flow Qn at 6 bar and Δp = 1 bar

Directional valves ► Pneumatically operated

3/2-directional valve, Series CD07

► Qn = 1400 l/min ► pipe connection ► compressed air connection output: G 1/4 ► suitable for ATEX

Dimensions



3/2-directional valve, Series CD07

► Qn = 1400 l/min ► pipe connection ► compressed air connection output: M14x1,5 ► suitable for ATEX



00134148

Version	Spool valve, zero overlap
Sealing principle	Soft sealing
Working pressure min./max.	-0.95 bar / 10 bar
Control pressure min./max.	See table below
Ambient temperature min./max.	See table below
Medium temperature min./max.	See table below
Medium	Compressed air
Max. particle size	50 µm
Oil content of compressed air	0 mg/m³ - 1 mg/m³
Materials:	
Housing	Die cast zinc
Seals	Acrylonitrile Butadiene Rubber

Technical Remarks

- The min. control pressure must be adhered to, since otherwise faulty switching and valve failure may result!
- The pressure dew point must be at least 15 °C under ambient and medium temperature and may not exceed 3 °C.
- The oil content of compressed air must remain constant during the life cycle.
- Use only the approved oils from AVENTICS, see chapter „Technical information“.
- option valve: The input and output compressed air connections can be exchanged. The valve can thereby be used in the NC or NO operating mode.

		Compressed air connection				Flow rate value	Qn	Control pressure min./max.	Ambient temperature min./max.	Medium temperature min./max.	Part No.
		Input	Output	Exhaust	Pilot connection						
						[l/min]		[bar]	[°C]	[°C]	
	NO/NC	M14x1,5	M14x1,5	M14x1,5	M10x1	1400	3 / 10	-25 °C / +80 °C	-25 °C / +80 °C		5710400000
							4 / 10	-35 °C / +80 °C	-35 °C / +80 °C		5710400090
	NO/NC	M14x1,5	M14x1,5	M14x1,5	M10x1	1400	2 / 10	-25 °C / +80 °C	-25 °C / +80 °C		5710401000

Part No.	Weight
	[kg]
5710400000	0.4
5710400090	0.4
5710401000	0.4

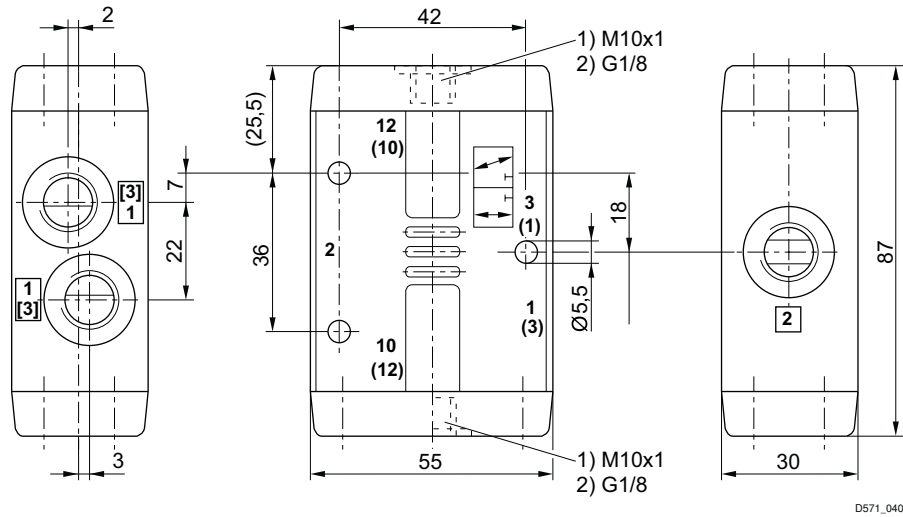
Nominal flow Qn at 6 bar and Δp = 1 bar

Directional valves ► Pneumatically operated

3/2-directional valve, Series CD07

► Q_n = 1400 l/min ► pipe connection ► compressed air connection output: M14x1,5 ► suitable for ATEX

Dimensions



5/2-directional valve, Series CD07
► Qn = 1200 l/min ► pipe connection ► compressed air connection output: G 1/4 ► suitable for ATEX


00134149

Version	Spool valve, zero overlap
Sealing principle	Soft sealing
Mounting on manifold strip	P-strip, PRS strip
Working pressure min./max.	-0.95 bar / 10 bar
Control pressure min./max.	See table below
Ambient temperature min./max.	-25 °C / +80 °C
Medium temperature min./max.	-25 °C / +80 °C
Medium	Compressed air
Max. particle size	50 µm
Oil content of compressed air	0 mg/m³ - 1 mg/m³
Compressed air connection	according to ISO 228-1
Materials:	
Housing	Die cast zinc
Seals	Acrylonitrile Butadiene Rubber

Technical Remarks

- The min. control pressure must be adhered to, since otherwise faulty switching and valve failure may result!
- The pressure dew point must be at least 15 °C under ambient and medium temperature and may not exceed 3 °C.
- The oil content of compressed air must remain constant during the life cycle.
- Use only the approved oils from AVENTICS, see chapter „Technical information“.

	Compressed air connection				Flow rate value	Control pressure min./max.	Weight	Part No.
	Input	Output	Exhaust	Pilot connection	Qn			
					[l/min]	[bar]	[kg]	
	G 1/4	G 1/4	G 1/4	G 1/8	1200	3 / 10	0.5	5710500100
	G 1/4	G 1/4	G 1/4	G 1/8	1200	2 / 10	0.5	5710501100

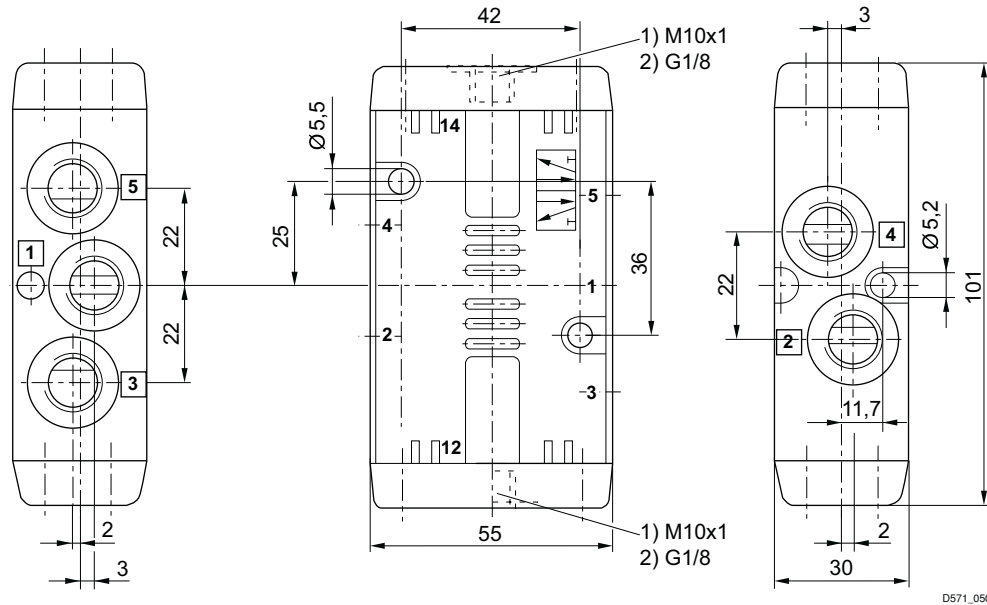
1) Protected against dust

Nominal flow Qn at 6 bar and Δp = 1 bar

5/2-directional valve, Series CD07

► Qn = 1200 l/min ► pipe connection ► compressed air connection output: G 1/4 ► suitable for ATEX

Dimensions



5/2-directional valve, Series CD07
► Qn = 1200 l/min ► pipe connection ► compressed air connection output: M14x1,5 ► suitable for ATEX


00134149

Version	Spool valve, zero overlap
Sealing principle	Soft sealing
Mounting on manifold strip	P-strip, PRS strip
Working pressure min./max.	-0.95 bar / 10 bar
Control pressure min./max.	See table below
Ambient temperature min./max.	-25 °C / +80 °C
Medium temperature min./max.	-25 °C / +80 °C
Medium	Compressed air
Max. particle size	50 µm
Oil content of compressed air	0 mg/m³ - 1 mg/m³
Materials:	
Housing	Die cast zinc
Seals	Acrylonitrile Butadiene Rubber

Technical Remarks

- The min. control pressure must be adhered to, since otherwise faulty switching and valve failure may result!
- The pressure dew point must be at least 15 °C under ambient and medium temperature and may not exceed 3 °C.
- The oil content of compressed air must remain constant during the life cycle.
- Use only the approved oils from AVENTICS, see chapter „Technical information“.

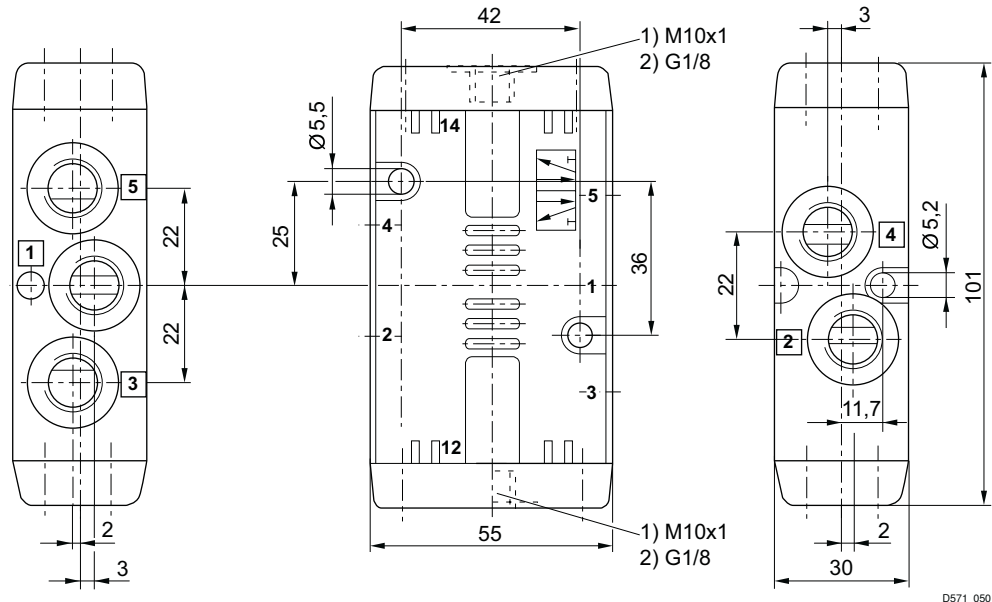
	Compressed air connection				Flow rate value	Control pressure min./max.	Weight	Note	Part No.
	Input	Output	Exhaust	Pilot connection	Qn				
					[l/min]	[bar]	[kg]		
	M14x1,5	M14x1,5	M14x1,5	M10x1	1200	3 / 10	0.5	-	5710500000
								1)	5710509300
	M14x1,5	M14x1,5	M14x1,5	M10x1	1200	2 / 10	0.5	-	5710501000
1) Protected against dust Nominal flow Qn at 6 bar and Δp = 1 bar									

Directional valves ► Pneumatically operated

5/2-directional valve, Series CD07

► Qn = 1200 l/min ► pipe connection ► compressed air connection output: M14x1,5 ► suitable for ATEX

Dimensions



Directional valves ► Pneumatically operated
5/2-directional valve, Series CD07

► cold-resistant ► Qn = 1200 l/min ► pipe connection ► compressed air connection output: G 1/4 ► suitable for ATEX



00134149

Version	Spool valve, zero overlap
Sealing principle	Soft sealing
Mounting on manifold strip	P-strip, PRS strip
Working pressure min./max.	-0.95 bar / 10 bar
Control pressure min./max.	See table below
Ambient temperature min./max.	-40 °C / +70 °C
Medium temperature min./max.	-40 °C / +70 °C
Medium	Compressed air
Max. particle size	50 µm
Oil content of compressed air	0 mg/m³ - 1 mg/m³
Compressed air connection	according to ISO 228-1
Materials:	
Housing	Die cast zinc
Seals	Acrylonitrile Butadiene Rubber; Polyurethane

Technical Remarks

- The min. control pressure must be adhered to, since otherwise faulty switching and valve failure may result!
- The pressure dew point must be at least 15 °C under ambient and medium temperature and may not exceed 3 °C.
- The oil content of compressed air must remain constant during the life cycle.
- Use only the approved oils from AVENTICS, see chapter „Technical information“.

	Compressed air connection				Flow rate value	Control pressure min./max.	Weight	Part No.
	Input	Output	Exhaust	Pilot connection	Qn			
					[l/min]	[bar]	[kg]	
	G 1/4	G 1/4	G 1/4	G 1/8	1200	3.5 / 10	0.5	5710500190
	G 1/4	G 1/4	G 1/4	G 1/8	1200	3 / 10	0.5	5710501190

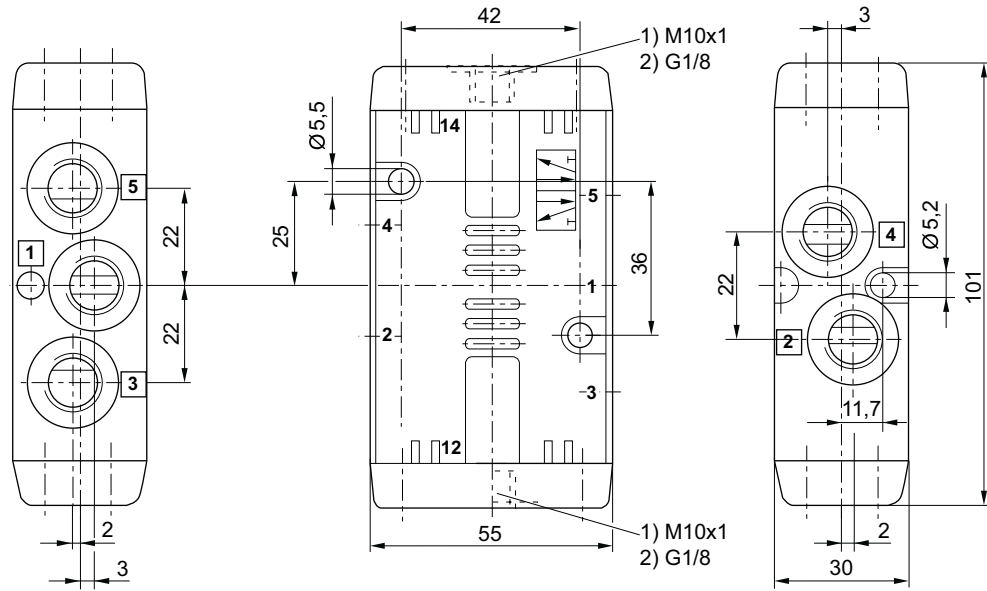
Nominal flow Qn at 6 bar and Δp = 1 bar

Directional valves ► Pneumatically operated

5/2-directional valve, Series CD07

► cold-resistant ► $Q_n = 1200 \text{ l/min}$ ► pipe connection ► compressed air connection output: G 1/4 ► suitable for ATEX

Dimensions



D571_050

Directional valves ► Pneumatically operated
5/3-directional valve, Series CD07
► Qn = 880 - 1070 l/min ► pipe connection ► compressed air connection output: G 1/4 ► suitable for ATEX


00134150

Version	Spool valve, zero overlap
Sealing principle	Soft sealing
Mounting on manifold strip	P-strip, PRS strip
Working pressure min./max.	-0.95 bar / 10 bar
Control pressure min./max.	3 bar / 10 bar
Ambient temperature min./max.	-25 °C / +80 °C
Medium temperature min./max.	-25 °C / +80 °C
Medium	Compressed air
Max. particle size	50 µm
Oil content of compressed air	0 mg/m³ - 1 mg/m³
Compressed air connection	according to ISO 228-1
Materials:	
Housing	Die cast zinc; Polyamide, fiber-glass reinforced
Seals	Acrylonitrile Butadiene Rubber

Technical Remarks

- The min. control pressure must be adhered to, since otherwise faulty switching and valve failure may result!
- The pressure dew point must be at least 15 °C under ambient and medium temperature and may not exceed 3 °C.
- The oil content of compressed air must remain constant during the life cycle.
- Use only the approved oils from AVENTICS, see chapter „Technical information“.

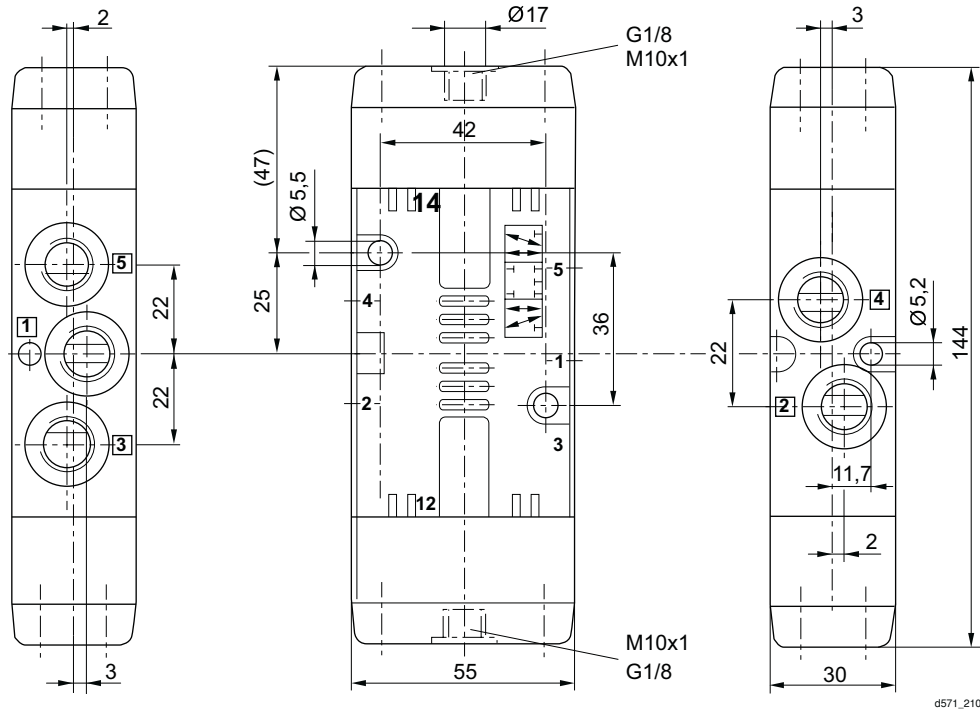
	Compressed air connection				Flow rate value			Weight	Part No.
	Input	Output	Exhaust	Pilot connection	Qn	Qn 1 ► 2	Qn 2 ► 3		
					[l/min]			[kg]	
	G 1/4	G 1/4	G 1/4	G 1/8	900	960	-	1.15	5710502100
	G 1/4	G 1/4	G 1/4	G 1/8	900	1030	880	1.15	5710502110
	G 1/4	G 1/4	G 1/4	G 1/8	900	1070	950	1.15	5710502120

Nominal flow Qn at 6 bar and Δp = 1 bar

5/3-directional valve, Series CD07

► Qn = 880 - 1070 l/min ► pipe connection ► compressed air connection output: G 1/4 ► suitable for ATEX

Dimensions



5/3-directional valve, Series CD07

► Qn = 900 - 960 l/min ► pipe connection ► compressed air connection output: M14x1,5 ► suitable for ATEX

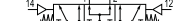


00134150

Version	Spool valve, zero overlap
Sealing principle	Soft sealing
Mounting on manifold strip	P-strip, PRS strip
Working pressure min./max.	-0.95 bar / 10 bar
Control pressure min./max.	3 bar / 10 bar
Ambient temperature min./max.	-25 °C / +80 °C
Medium temperature min./max.	-25 °C / +80 °C
Medium	Compressed air
Max. particle size	50 µm
Oil content of compressed air	0 mg/m³ - 1 mg/m³
Compressed air connection	according to ISO 228-1
 Materials:	
Housing	Die cast zinc; Polyamide, fiber-glass reinforced
Seals	Acrylonitrile Butadiene Rubber

Technical Remarks

- The min. control pressure must be adhered to, since otherwise faulty switching and valve failure may result!
- The pressure dew point must be at least 15 °C under ambient and medium temperature and may not exceed 3 °C.
- The oil content of compressed air must remain constant during the life cycle.
- Use only the approved oils from AVENTICS, see chapter „Technical information“.

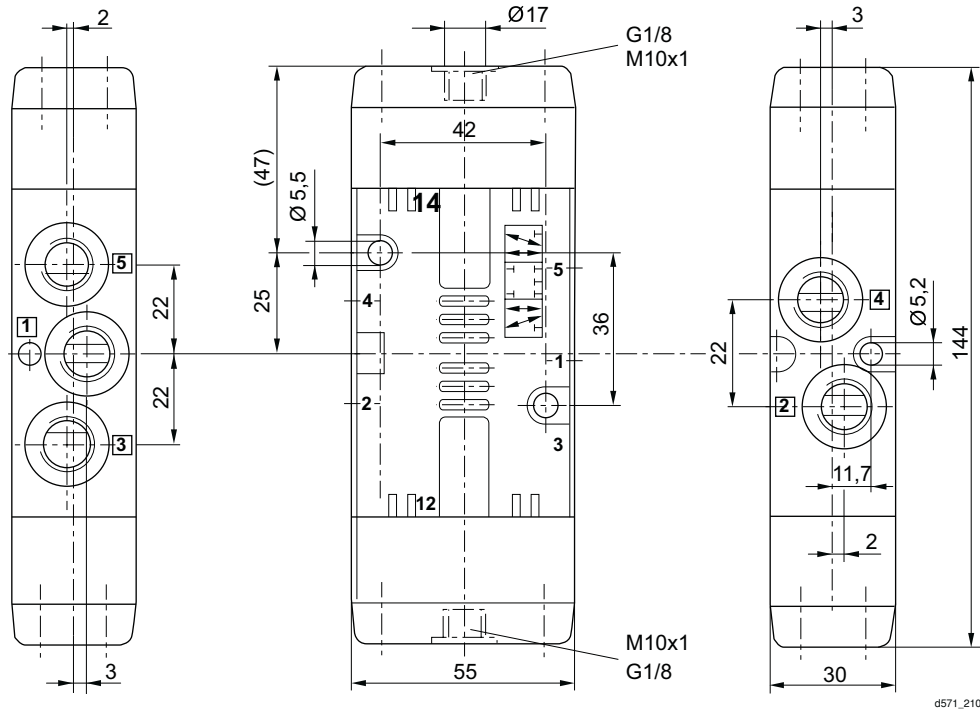
	Compressed air connection				Flow rate value			
	Input	Output	Exhaust	Pilot connection	Qn 1►2	Qn 2►3	Weight	Part No.
					[l/min]		[kg]	
	M14x1,5	M14x1,5	M14x1,5	M10x1	960	900	1.15	R412008118
Nominal flow Qn at 6 bar and $\Delta p = 1$ bar								

Directional valves ▶ Pneumatically operated

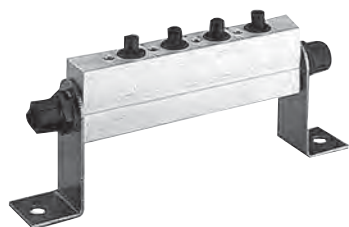
5/3-directional valve, Series CD07

▶ Qn = 900 - 960 l/min ▶ pipe connection ▶ compressed air connection output: M14x1,5 ▶ suitable for ATEX

Dimensions



d571_210

Series CD07
Accessories
P-manifold
► for series CD07, 5/2 and 5/3-directional valves


3337-121

Ambient temperature min./max.

-25 °C / +80 °C

Medium temperature min./max.

-25 °C / +80 °C

Medium

Compressed air

Working pressure min./max.

-0.95 bar / 16 bar

Exhaust (3,5)

uncollected exhaust

Compressed air connection

according to ISO 228-1

Materials:

Base plate

Aluminum; Polyoxymethylene

Seals

Acrylonitrile Butadiene Rubber

Mounting bracket

Steel

Technical Remarks

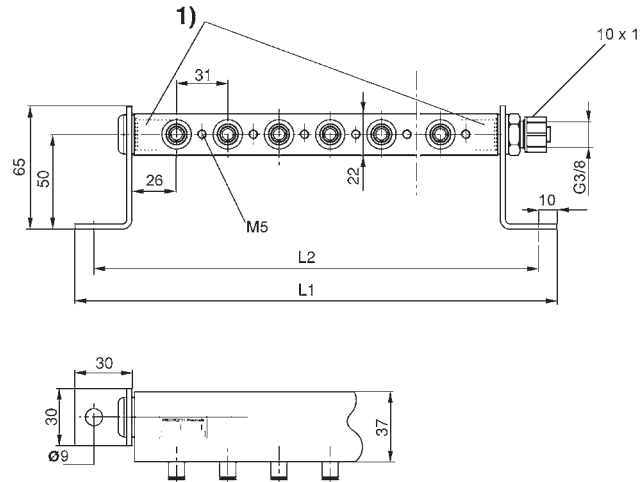
- The min. control pressure must be adhered to, since otherwise faulty switching and valve failure may result!
- The pressure dew point must be at least 15 °C under ambient and medium temperature and may not exceed 3 °C.
- The oil content of compressed air must remain constant during the life cycle.
- Use only the approved oils from AVENTICS, see chapter „Technical information“.

Compressed air connection	Number of valve positions	Weight	Part No.
Input			
[1]		[kg]	
Ø 10x1	2	0.277	3337120222
	3	0.338	3337120232
	4	0.401	3337120242
	5	0.462	3337120252
	6	0.52	3337120262
	7	0.595	3337120272
	8	0.64	3337120282
	9	0.705	3337120292
	10	0.773	3337120302
	11	0.82	3337120312
	12	0.914	3337120322

Directional valves ► Pneumatically operated

Series CD07 Accessories

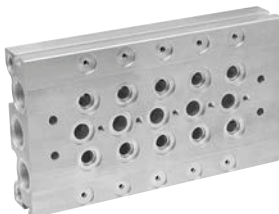
Dimensions



1) Only use fittings with max. length of thread engagement equal to 12 mm.

Part No.	L1	L2	Weight kg									
3337120222	152	132	0.277									
3337120232	183	163	0.338									
3337120242	214	194	0.401									
3337120252	245	225	0.462									
3337120262	276	256	0.52									
3337120272	307	287	0.595									
3337120282	338	318	0.64									
3337120292	369	349	0.705									
3337120302	400	380	0.773									
3337120312	431	411	0.82									
3337120322	462	442	0.914									

R, P, S subbase, Series CD07



23316

Ambient temperature min./max.
Medium temperature min./max.
Medium
Working pressure min./max.
Exhaust (3,5)

Compressed air connection

Materials:
Base plate
Seals

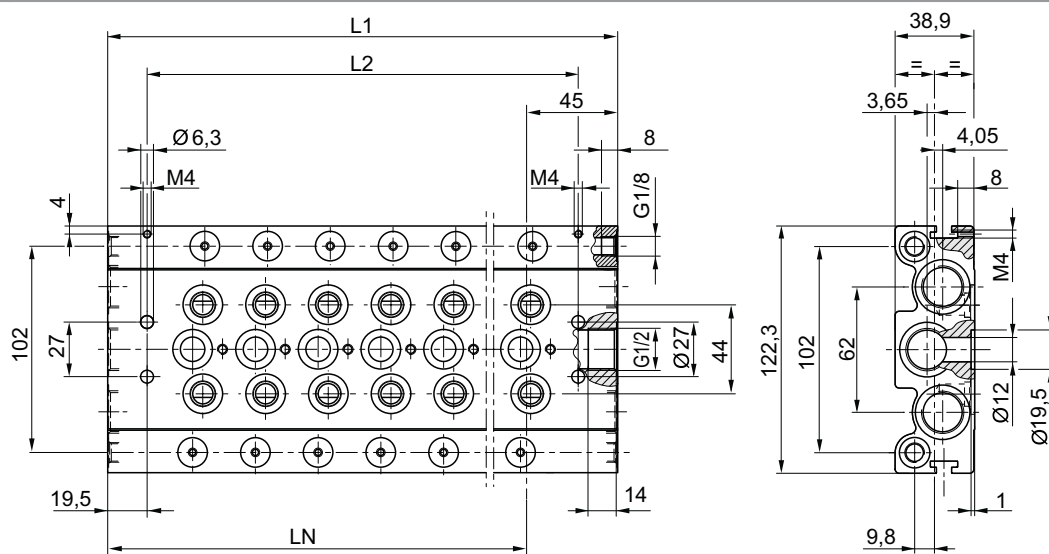
-25 °C / +80 °C
-25 °C / +80 °C
Compressed air
-0.95 bar / 16 bar
With directional exhaust (3/5)
Ports separated
according to ISO 228-1

Aluminum; Polyoxymethylene
Acrylonitrile Butadiene Rubber

Series CD07
Accessories
Technical Remarks

- The min. control pressure must be adhered to, since otherwise faulty switching and valve failure may result!
- The pressure dew point must be at least 15 °C under ambient and medium temperature and may not exceed 3 °C.
- The oil content of compressed air must remain constant during the life cycle.
- Use only the approved oils from AVENTICS, see chapter „Technical information“.

Compressed air connection			Number of valve positions	Weight	Part No.
Input	Exhaust	Pilot connection			
[1]	[3 / 5]	[14]		[kg]	
G 1/2	G 1/2	G 1/8	4	1.446	8985072042
			6	1.94	8985072062
			8	2.422	8985072082
			10	2.943	8985072102
			12	3.401	8985072122

Dimensions


00138184

Part No.	L1	L2	LN	Weight kg								
8985072042	183	144	138	1.446								
8985072062	245	206	200	1.94								
8985072082	307	268	262	2.422								
8985072102	369	330	324	2.943								

Directional valves ► Pneumatically operated

Series CD07 Accessories

Part No.	L1	L2	LN	Weight kg								
8985072122	431	392	386	3.401								

Accessories, Series CD07



16412

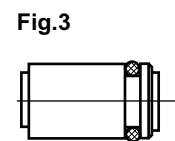
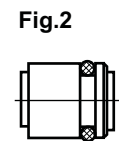
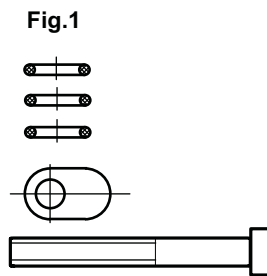


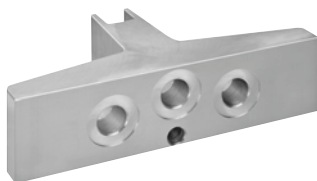
Fig.4



00133201

Part No.	Type	Weight [kg]	Delivery quantity [Piece]	Fig.					
3354600002	Mounting kit for 10 valves, delivery includes: 30 seals, 10 washers, and 10 mounting screws.	0.125	1	Fig. 1					
3354600082	P plug	0.022	1	Fig. 2					
3354600072	R/S plug	0.023	1	Fig. 3					

Blanking plate, for series CD07



16413

Ambient temperature min./max.
Medium temperature min./max.
Medium
Working pressure min./max.
Number of valve positions

-25°C / +80°C
-25°C / +80°C
Compressed air
-0.95 bar / 16 bar
1

Materials:
Base plate
Seals

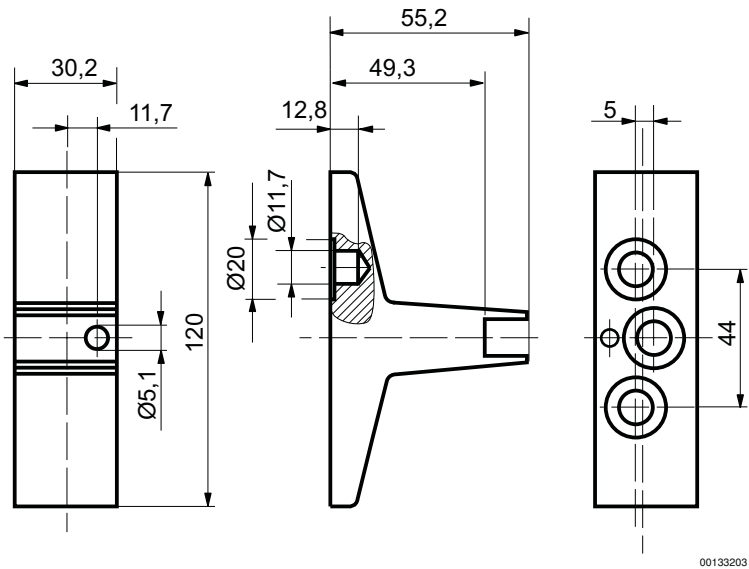
Aluminum
Acrylonitrile Butadiene Rubber

Weight [kg]	Part No.
0.181	3354601024

Series CD07

Accessories

Dimensions



Silencers, Series SI1

▶ Sintered bronze



P100_060

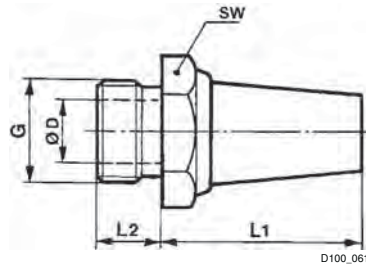
Working pressure min./max.	0 bar / 10 bar
Ambient temperature min./max.	-25 °C / +80 °C
Medium	Compressed air
Materials:	
Silencers	Sintered bronze
Thread	Brass

Compressed air connection	Sound pressure level	Qn	Delivery quantity	Weight	Part No.
	[dB]	[l/min]	[Piece(s)]	[kg]	
G 1/4	79	2900	10	0.02	1827000001
	-	-		0.013	R412004817

Directional valves ► Pneumatically operated

Series CD07
Accessories

Dimensions



Part No.	Port G	SW	Ø D	L1	L2							
1827000001	G 1/4	17	8.5	25	8							
R412004817	G 1/4	16	8.5	18.7	7.6							

Sound pressure level measured at 6 bar at 1 m distance

Silencers, Series SI1
► Sintered bronze



00128791

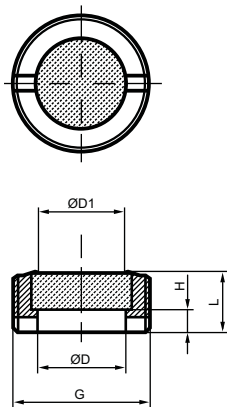
Working pressure min./max.
Ambient temperature min./max.
Medium

0 bar / 10 bar
-25°C / +80°C
Compressed air

Materials:
Silencers
Thread

Sintered bronze
Brass

Compressed air connection	Delivery quantity	Part No.
	[Piece(s)]	
G 1/4	10	R414000155

Series CD07
Accessories
Dimensions


00129904

Part No.	Port G	Ø D	Ø D1	H	L							
R414000155	G 1/4	8	6	3	6							

Silencers, Series SI1
► Sintered bronze


P100_037

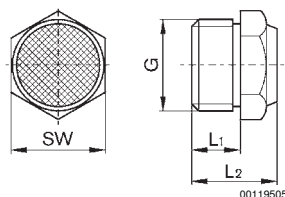
Working pressure min./max.
Ambient temperature min./max.
Medium

0 bar / 10 bar
-25 °C / +80 °C
Compressed air

Materials:
Silencers
Thread

Sintered bronze
Brass

Compressed air connection	Sound pressure level	Qn	Delivery quantity	Weight	Part No.
	[dB]	[l/min]	[Piece(s)]	[kg]	
G 1/4	88	900	10	0.01	1827000033

Dimensions


00119505

Directional valves ► Pneumatically operated

Series CD07

Accessories

Part No.	Port G	L1	L2	SW								
1827000033	G 1/4	8	13.5	17								
Sound pressure level measured at 6 bar at 1 m distance												

Silencers, Series SI1

► Polyethylene



Working pressure min./max.
Ambient temperature min./max.
Medium

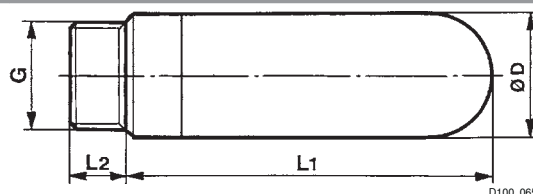
0 bar / 10 bar
-25°C / +80°C
Compressed air

Materials:
Silencers
Thread

Polyethylene
Polyethylene

Compressed air connection	Sound pressure level	Qn	Delivery quantity	Weight	Part No.
	[dB]	[l/min]	[Piece(s)]	[kg]	
G 1/4	80	3100	5	0.003	1827000020

Dimensions



Part No.	Port G	Ø D	L1	L2								
1827000020	G 1/4	15.5	34.5	8								
Sound pressure level measured at 6 bar at 1 m distance												

AVENTICS GmbH
Ulmer Straße 4
30880 Laatzen
Phone +49 511 2136-0
Fax +49 511 2136-269
www.aventics.com
info@aventics.com



Find more contact information at
www.aventics.com/contact

Only use the AVENTICS products shown in industrial applications. Read the product documentation completely and carefully before using the product. Observe the applicable regulations and laws of the respective country. When integrating the product into applications, note the system manufacturer's specifications for safe use of the product. The data specified only serve to describe the product. No statements concerning a certain condition or suitability for a certain application can be derived from our information. The information given does not release the user from the obligation of own judgment and verification. It must be remembered that the products are subject to a natural process of wear and aging.

27-12-2015

An example configuration is depicted on the title page. The delivered product may thus vary from that in the illustration. Subject to change. © AVENTICS S.à r.l. This document, as well as the data, specifications and other information set forth in it, are the exclusive property of AVENTICS S.à r.l.. It may not be reproduced or given to third parties without its consent. PDF online

Rexroth
Pneumatics