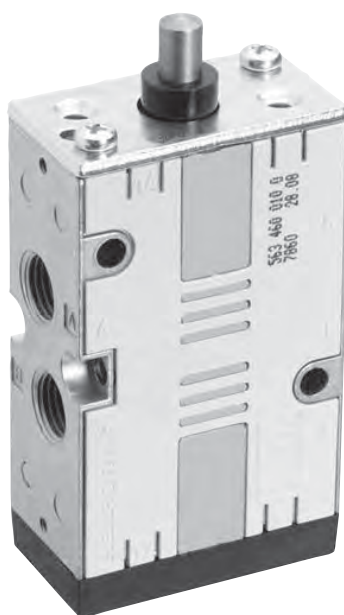


Directional valves ► Mechanically operated

Series CD07











Brochure

Rexroth
Pneumatics



Directional valves ► Mechanically operated

Series CD07

	3/2-directional valve, Series CD07 ► Qn= 1400 l/min ► pipe connection ► compressed air connection output: G 1/4 ► suitable for ATEX	3
	3/2-directional valve, Series CD07 ► Qn= 1400 l/min ► pipe connection ► compressed air connection output: M14x1,5 ► suitable for ATEX	12
	5/2-directional valve, Series CD07 ► Qn= 1200 l/min ► pipe connection ► compressed air connection output: G 1/4 ► suitable for ATEX	18
	5/2-directional valve, Series CD07 ► Qn= 1200 l/min ► pipe connection ► compressed air connection output: G 1/4 ► cold-resistant ► suitable for ATEX	24
	5/2-directional valve, Series CD07 ► Qn= 1200 l/min ► pipe connection ► compressed air connection output: G 1/4 ► suitable for ATEX	26
	5/2-directional valve, Series CD07 ► Qn= 1200 l/min ► pipe connection ► compressed air connection output: G 1/4 ► suitable for ATEX	27
Accessories		
	Accessories, Series CD07	29
	Accessories, Series CD07	30
	Silencers, Series SI1 ► Sintered bronze	30
	Silencers, Series SI1 ► Stainless steel	31

Directional valves ► Mechanically operated

3/2-directional valve, Series CD07

► Qn= 1400 l/min ► pipe connection ► compressed air connection output: G 1/4 ► suitable for ATEX



00134151

Version
Sealing principle
Working pressure min./max.
Ambient temperature min./max.
Medium temperature min./max.
Medium
Max. particle size
Oil content of compressed air
Compressed air connection

Spool valve, zero overlap
Soft sealing
-0.95 bar / 10 bar
-25 °C / +80 °C
-25 °C / +80 °C
Compressed air
50 µm
0 mg/m³ - 1 mg/m³
according to ISO 228-1

Materials:
Seals

Acrylonitrile Butadiene Rubber

Technical Remarks

- option valve: The input and output compressed air connections can be exchanged. The valve can thereby be used in the NC or NO operating mode.

	Actuating element	Version	Compressed air connection				Qn	Actuating force Min.	Part No.
			Input	Output	Exhaust	Pilot connection			
							[l/min]	[N]	
	Plunger	NC/NO	G 1/4	G 1/4	G 1/4	-	1400	70	5634400100
	Plunger	NC/NO	G 1/4	G 1/4	G 1/4	-	1400	40	5634409010
	Roller	NC/NO	G 1/4	G 1/4	G 1/4	-	1400	40	5634410100
	Roller	NC/NO	G 1/4	G 1/4	G 1/4	G 1/8	1400	40	5634411100
	Hand lever, with detent, without detent	NC/NO	G 1/4	G 1/4	G 1/4	-	1400	20	5634430100
	Hand lever	NC/NO	G 1/4	G 1/4	G 1/4	-	1400	15	5634440100
	Lever, horizontal, with detent	NC/NO	G 1/4	G 1/4	G 1/4	-	1400	15	5634450100
	Button	NC/NO	G 1/4	G 1/4	G 1/4	-	1400	70	5634460100
	Button	NC/NO	G 1/4	G 1/4	G 1/4	G 1/8	1400	40	5634461100

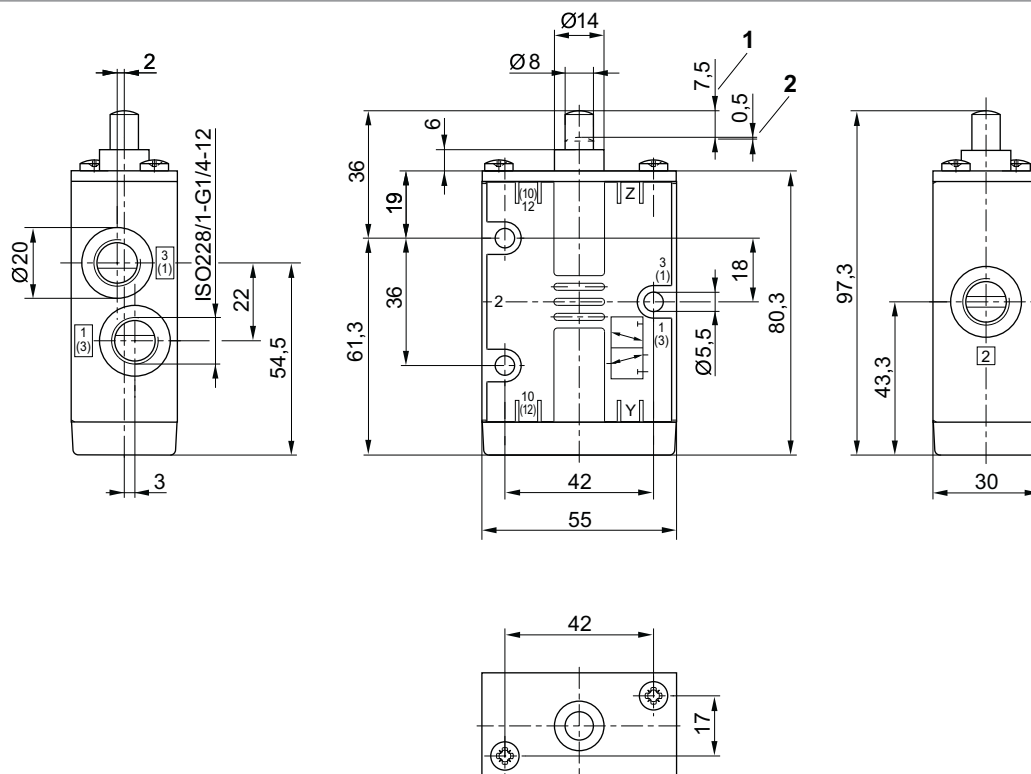
3/2-directional valve, Series CD07

► Qn= 1400 l/min ► pipe connection ► compressed air connection output: G 1/4 ► suitable for ATEX

Part No.	Control pressure min./max.	Material: Housing	Material: Actuating control	Weight	Fig.
	[bar]			[kg]	
5634400100	-	Die cast zinc; Polyamide, fiber-glass reinforced	Stainless steel	0.45	Fig. 1
5634409010	-	Die cast zinc	Stainless steel	0.45	Fig. 2
5634410100	-	Die cast zinc; Polyamide, fiber-glass reinforced	Stainless steel	0.5	Fig. 3
5634411100	2 / 10	Die cast zinc	Stainless steel	0.5	Fig. 4
5634430100	-	Die cast zinc; Polyamide, fiber-glass reinforced	Polyoxymethylene	0.53	Fig. 5
5634440100	-	Die cast zinc; Polyamide, fiber-glass reinforced	Polyoxymethylene	0.5	Fig. 6
5634450100	-	Die cast zinc; Polyamide, fiber-glass reinforced	Polyoxymethylene	0.55	Fig. 7
5634460100	-	Die cast zinc; Polyamide, fiber-glass reinforced	Polyoxymethylene	0.45	Fig. 8
5634461100	2 / 10	Die cast zinc; Polyamide, fiber-glass reinforced	Polyoxymethylene	0.45	Fig. 8

Nominal flow Qn at 6 bar and $\Delta p = 1$ bar

Dimensions, Fig. 1



1) Stroke 2) Overstroke

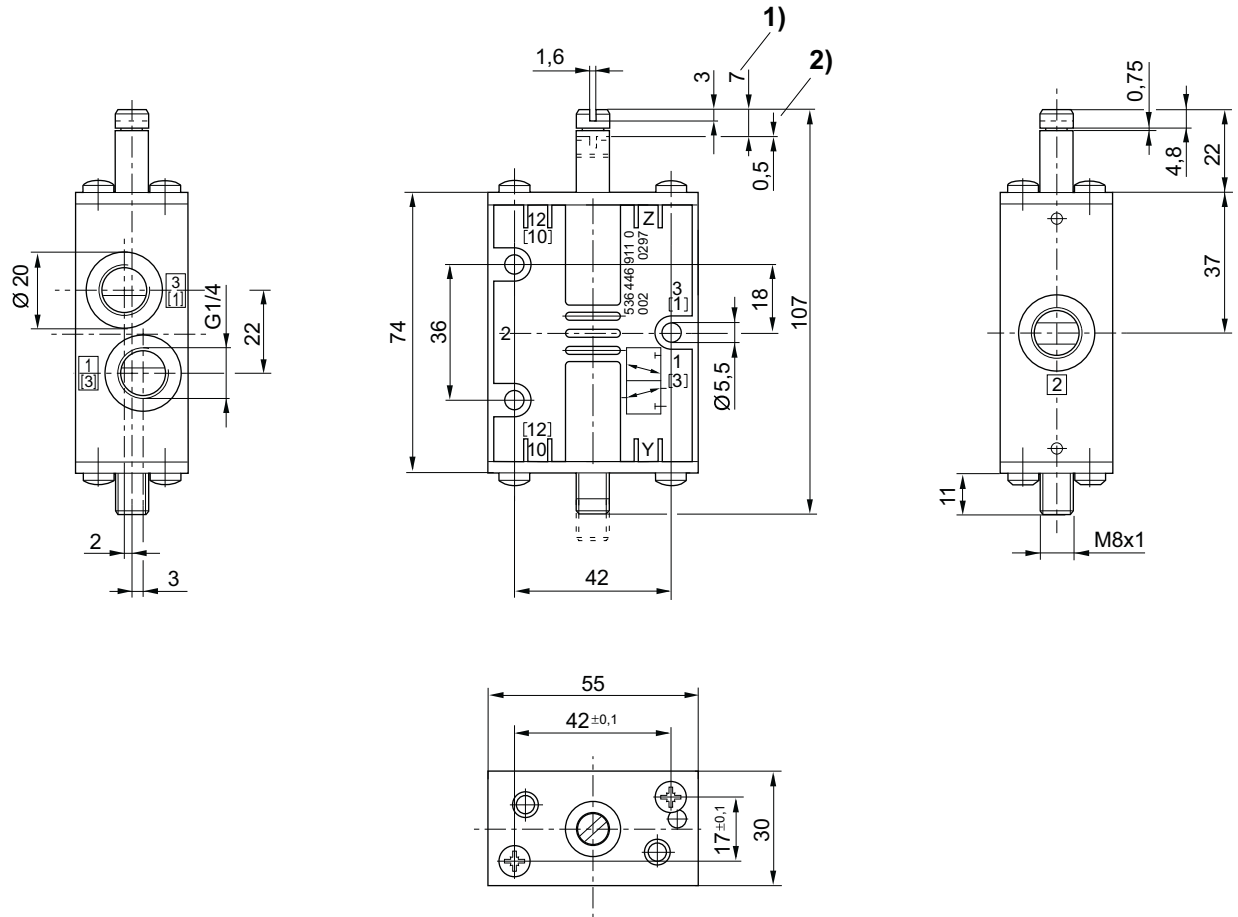
D563_440

Directional valves ▶ Mechanically operated

3/2-directional valve, Series CD07

▶ Qn= 1400 l/min ▶ pipe connection ▶ compressed air connection output: G 1/4 ▶ suitable for ATEX

Dimensions, Fig. 2



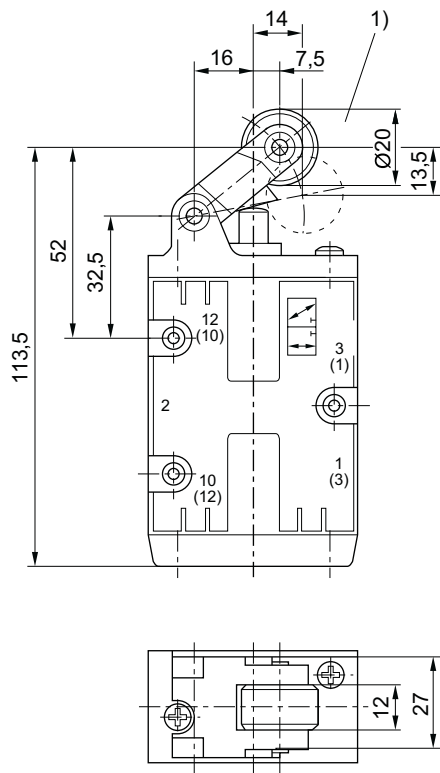
1) Stroke 2) Overstroke

00135344

3/2-directional valve, Series CD07

 ► Q_n= 1400 l/min ► pipe connection ► compressed air connection output: G 1/4 ► suitable for ATEX

Dimensions, Fig. 3



D563_441

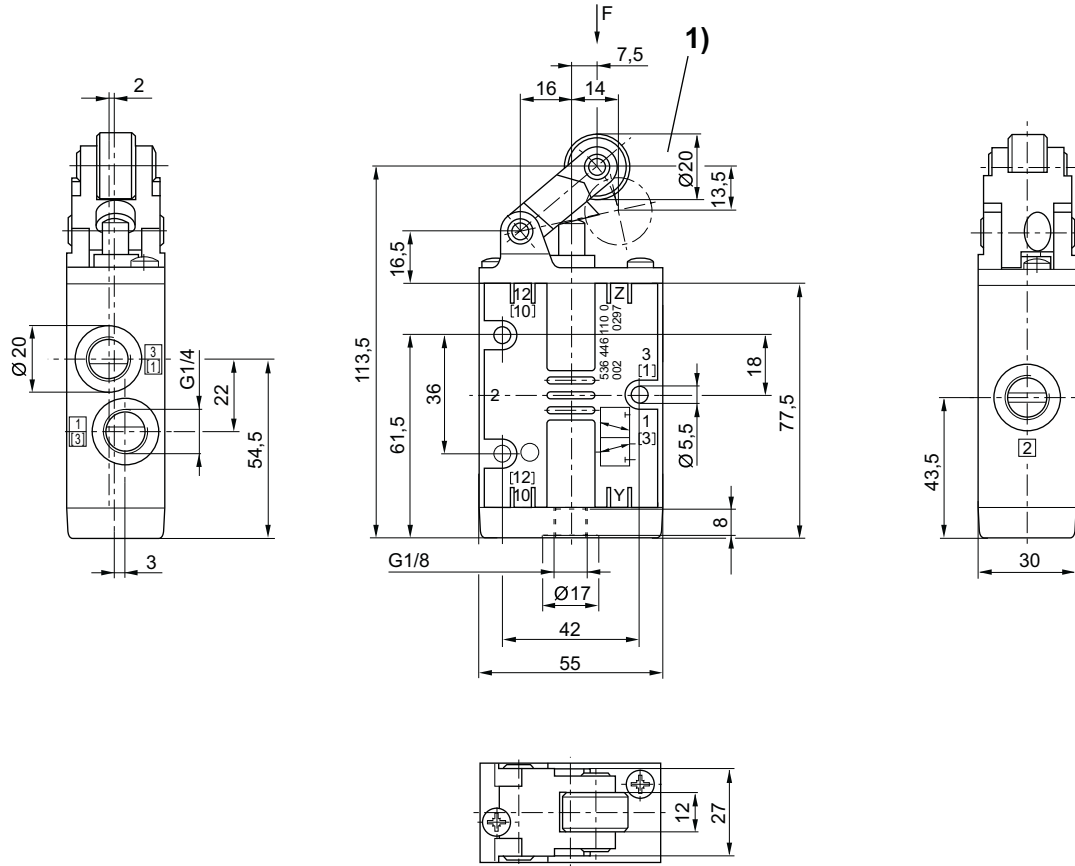
1) approach angle of rollers max. 30°

Directional valves ▶ Mechanically operated

3/2-directional valve, Series CD07

▶ Qn= 1400 l/min ▶ pipe connection ▶ compressed air connection output: G 1/4 ▶ suitable for ATEX

Dimensions, Fig. 4



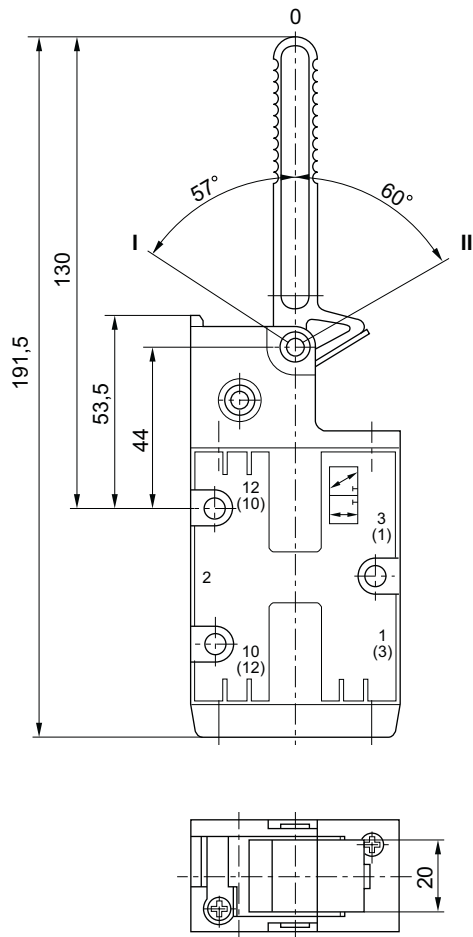
1) approach angle of rollers max. 30°

00135343

3/2-directional valve, Series CD07

► Qn= 1400 l/min ► pipe connection ► compressed air connection output: G 1/4 ► suitable for ATEX

Dimensions, Fig. 5



D563_441_a

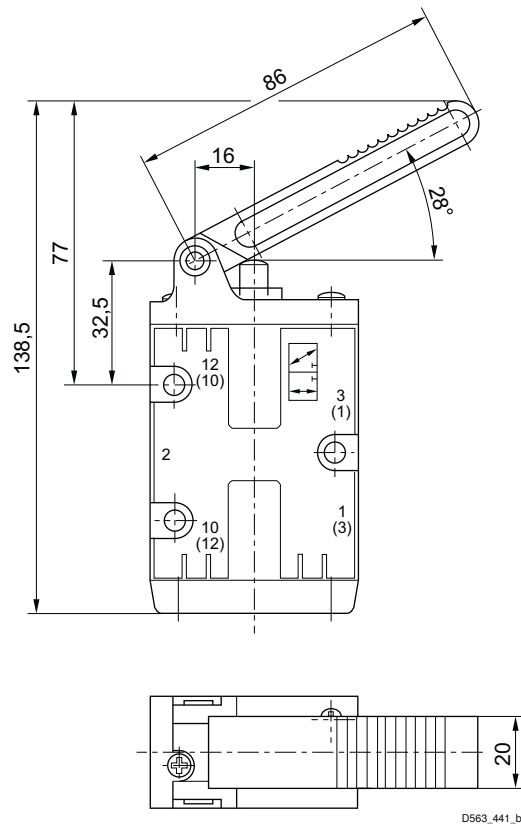
Position 0: initial position, position I: with detent; manual return, position II: automatic spring return.

Directional valves ▶ Mechanically operated

3/2-directional valve, Series CD07

▶ Qn= 1400 l/min ▶ pipe connection ▶ compressed air connection output: G 1/4 ▶ suitable for ATEX

Dimensions, Fig. 6

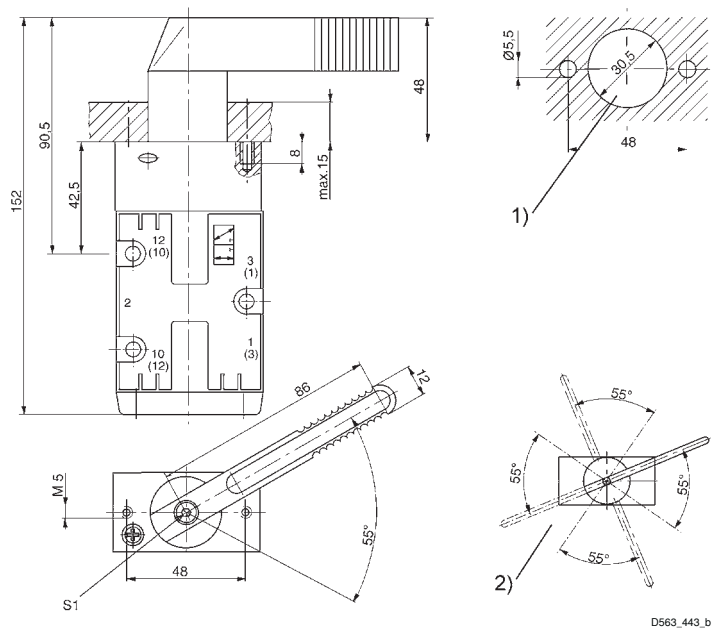


Dimensions of basic valve apply to all types of actuation.

3/2-directional valve, Series CD07

 ► Q_n= 1400 l/min ► pipe connection ► compressed air connection output: G 1/4 ► suitable for ATEX

Dimensions, Fig. 7



1) control panel installation (holes in mounting panel)

2) possible lever positions (basic position of hand lever adjustable in 90° steps after loosening screw "S1").

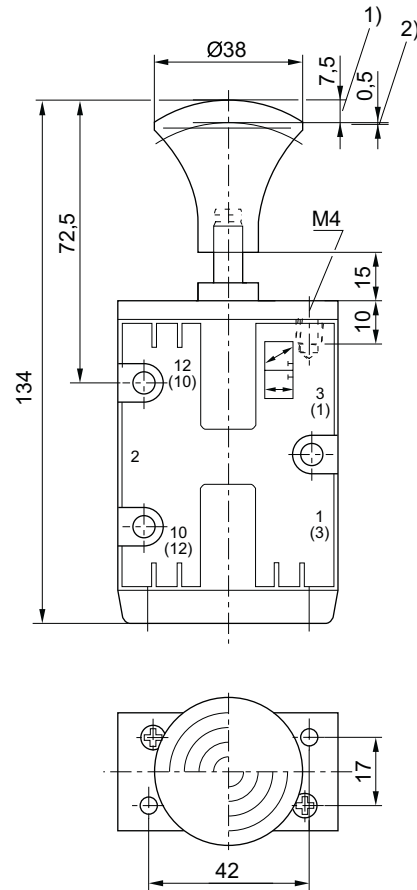
D563_443_b

Directional valves ▶ Mechanically operated

3/2-directional valve, Series CD07

▶ Qn= 1400 l/min ▶ pipe connection ▶ compressed air connection output: G 1/4 ▶ suitable for ATEX

Dimensions, Fig. 8



D563_443

1) Stroke 2) Overstroke

3/2-directional valve, Series CD07
► Qn= 1400 l/min ► pipe connection ► compressed air connection output: M14x1,5 ► suitable for ATEX


00134151

Version	Spool valve, zero overlap
Sealing principle	Soft sealing
Working pressure min./max.	-0.95 bar / 10 bar
Ambient temperature min./max.	-25 °C / +80 °C
Medium temperature min./max.	-25 °C / +80 °C
Medium	Compressed air
Max. particle size	50 µm
Oil content of compressed air	0 mg/m³ - 1 mg/m³
Compressed air connection	according to ISO 228-1

Materials:

Seals

Acrylonitrile Butadiene Rubber

Technical Remarks

- option valve: The input and output compressed air connections can be exchanged. The valve can thereby be used in the NC or NO operating mode.

	Actuating element	Version	Compressed air connection				Qn	Actuating force Min.	Part No.
			Input	Output	Exhaust	Pilot connection			
							[l/min]	[N]	
	Plunger	NC/NO	M14x1,5	M14x1,5	M14x1,5	-	1400	70	5634400000
	Roller	NC/NO	M14x1,5	M14x1,5	M14x1,5	-	1400	40	5634410000
	Button	NC/NO	M14x1,5	M14x1,5	M14x1,5	-	1400	70	5634460000
	Button	NC/NO	M14x1,5	M14x1,5	M14x1,5	M10x1	1400	40	5634461000
	Button	NC/NO	M14x1,5	M14x1,5	M14x1,5	M12x1,5	1400	40	5634469110
	Button, beige	NC/NO	M14x1,5	M14x1,5	M14x1,5	M10x1	1400	40	5634469310

Part No.	Control pressure min./max.	Material: Housing	Material: Actuating control	Weight	Fig.
	[bar]			[kg]	
5634400000	-	Die cast zinc; Polyamide, fiber-glass reinforced	Stainless steel	0.45	Fig. 1
5634410000	-	Die cast zinc; Polyamide, fiber-glass reinforced	Stainless steel	0.45	Fig. 2
5634460000	-	Die cast zinc; Polyamide, fiber-glass reinforced	Polyoxymethylene	0.45	Fig. 3
5634461000	2 / 10	Die cast zinc	Polyoxymethylene	0.45	Fig. 3

Nominal flow Qn at 6 bar and Δp = 1 bar

Directional valves ▶ Mechanically operated

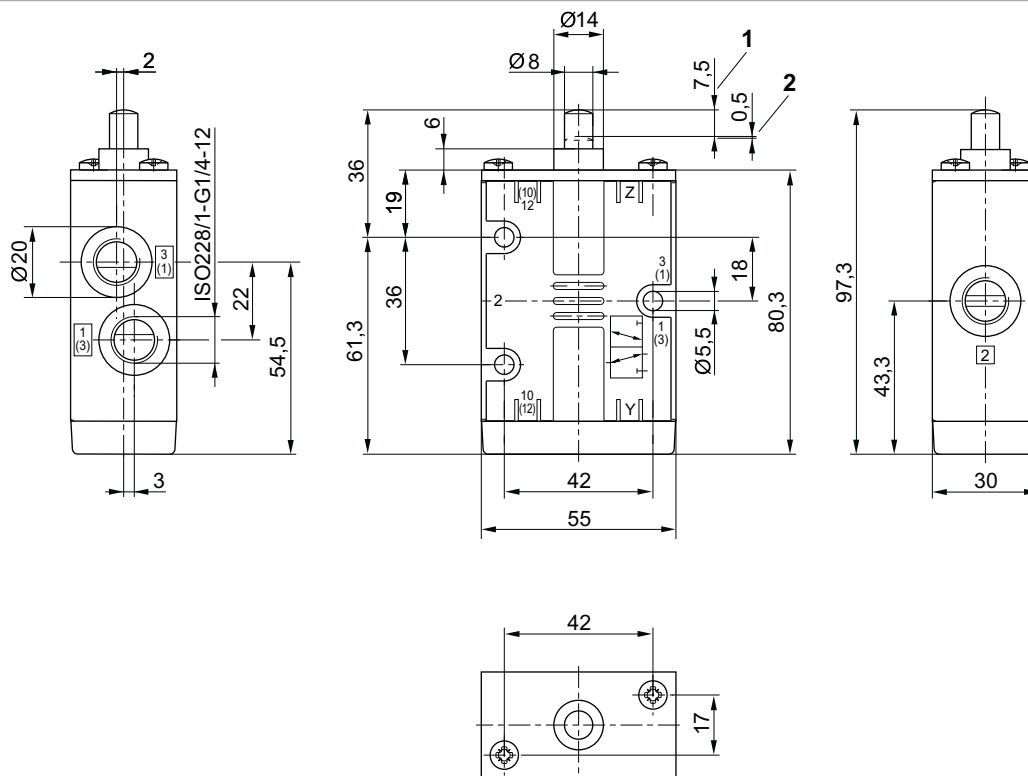
3/2-directional valve, Series CD07

▶ Qn= 1400 l/min ▶ pipe connection ▶ compressed air connection output: M14x1,5 ▶ suitable for ATEX

Part No.	Control pressure min./max.	Material: Housing	Material: Actuating control	Weight	Fig.
	[bar]			[kg]	
5634469110	5 / 10	Die cast zinc	Polyoxymethylene	0.45	Fig. 4
5634469310	3 / 10	Die cast zinc	Polyoxymethylene	0.45	Fig. 5

Nominal flow Qn at 6 bar and $\Delta p = 1$ bar

Dimensions, Fig. 1



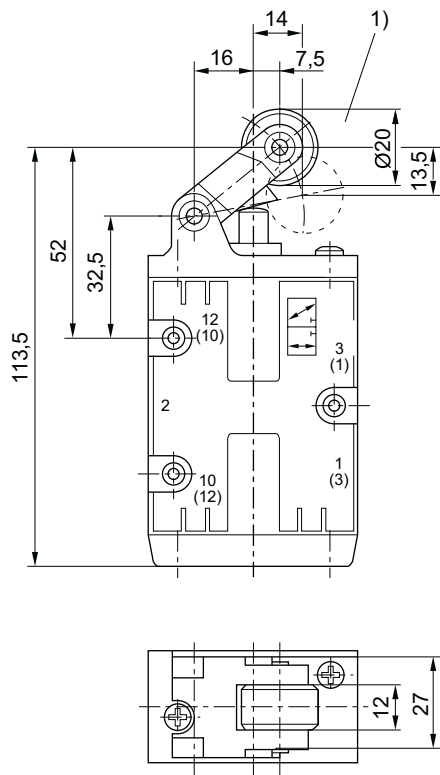
1) Stroke 2) Overstroke
Dimensions of basic valve apply to all types of actuation.

D563_440

3/2-directional valve, Series CD07

 ► Q_n= 1400 l/min ► pipe connection ► compressed air connection output: M14x1,5 ► suitable for ATEX

Dimensions, Fig. 2



D563_441

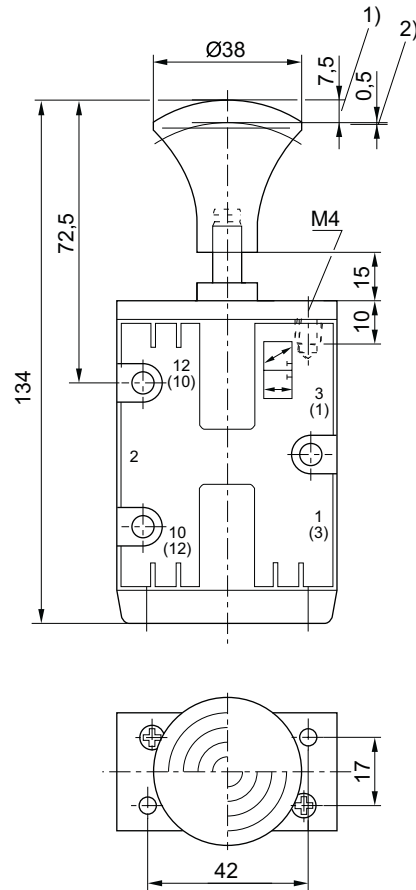
1) approach angle of rollers max. 30°

Directional valves ▶ Mechanically operated

3/2-directional valve, Series CD07

▶ Qn= 1400 l/min ▶ pipe connection ▶ compressed air connection output: M14x1,5 ▶ suitable for ATEX

Dimensions, Fig. 3



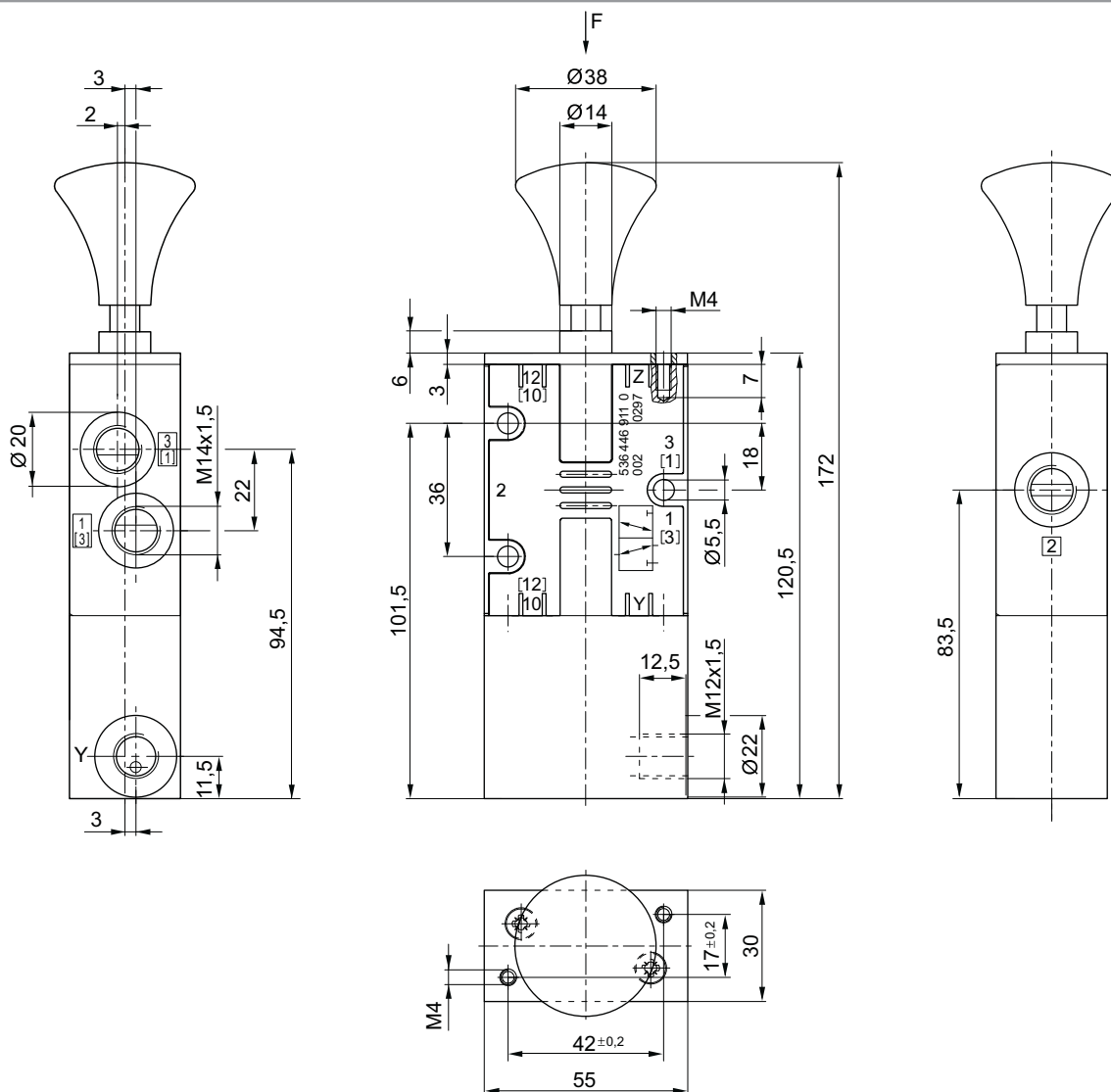
D563_443

1) Stroke 2) Overstroke

3/2-directional valve, Series CD07

 ► Q_n= 1400 l/min ► pipe connection ► compressed air connection output: M14x1,5 ► suitable for ATEX

Dimensions, Fig. 4



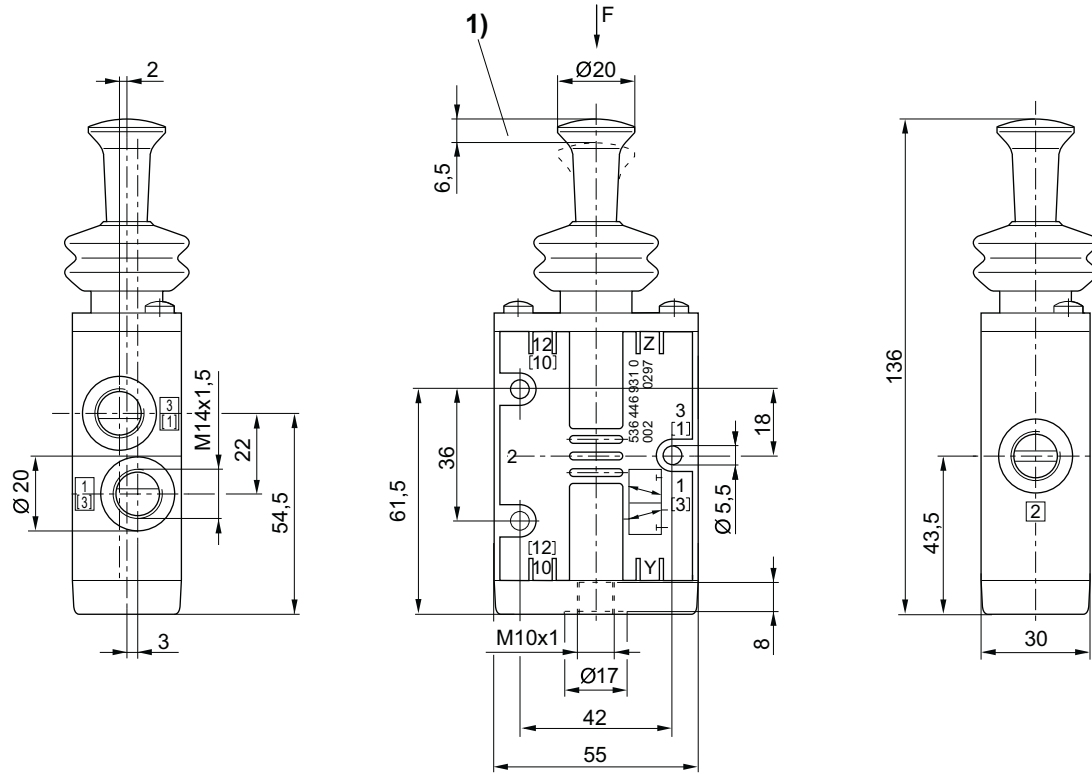
00135339

Directional valves ▶ Mechanically operated

3/2-directional valve, Series CD07

▶ Qn= 1400 l/min ▶ pipe connection ▶ compressed air connection output: M14x1,5 ▶ suitable for ATEX

Dimensions, Fig. 5



00135342

1) Stroke

5/2-directional valve, Series CD07
► Qn= 1200 l/min ► pipe connection ► compressed air connection output: G 1/4 ► suitable for ATEX


00134152

Version	Spool valve, zero overlap
Sealing principle	Soft sealing
Working pressure min./max.	-0.95 bar / 10 bar
Ambient temperature min./max.	-25 °C / +80 °C
Medium temperature min./max.	-25 °C / +80 °C
Medium	Compressed air
Max. particle size	50 µm
Oil content of compressed air	0 mg/m³ - 1 mg/m³
Compressed air connection	according to ISO 228-1

Materials:

Seals

Acrylonitrile Butadiene Rubber

	Actuating element	Compressed air connection				Qn	Actuating force Min.	Control pressure min./max.	Part No.
		Input	Output	Exhaust	Pilot connection				
						[l/min]	[N]	[bar]	
	Plunger	G 1/4	G 1/4	G 1/4	-	1200	70	-	5634600100
	Roller	G 1/4	G 1/4	G 1/4	-	1200	40	-	5634610100
	Hand lever, with detent, without detent	G 1/4	G 1/4	G 1/4	-	1200	20	-	5634630100
	Hand lever	G 1/4	G 1/4	G 1/4	-	1200	15	-	5634640100
	Rotary lever, with detent	G 1/4	G 1/4	G 1/4	-	1200	15	-	5634650100
	Button	G 1/4	G 1/4	G 1/4	-	1200	70	-	5634660100
	Button	G 1/4	G 1/4	G 1/4	G 1/8	1200	80	5 / 10	5634669200

Part No.	Material: Housing	Material: Actuating control	Weight	Fig.
			[kg]	
5634600100	Die cast zinc; Polyamide, fiber-glass reinforced	Stainless steel	0.54	Fig. 1
5634610100	Die cast zinc; Polyamide, fiber-glass reinforced	Stainless steel	0.59	Fig. 2
5634630100	Die cast zinc; Polyamide, fiber-glass reinforced	Polyoxymethylene	0.62	Fig. 3
5634640100	Die cast zinc; Polyamide, fiber-glass reinforced	Polyoxymethylene	0.59	Fig. 4
5634650100	Die cast zinc; Polyamide, fiber-glass reinforced	Polyoxymethylene	0.64	Fig. 5

Nominal flow Qn at 6 bar and Δp = 1 bar

Directional valves ► Mechanically operated

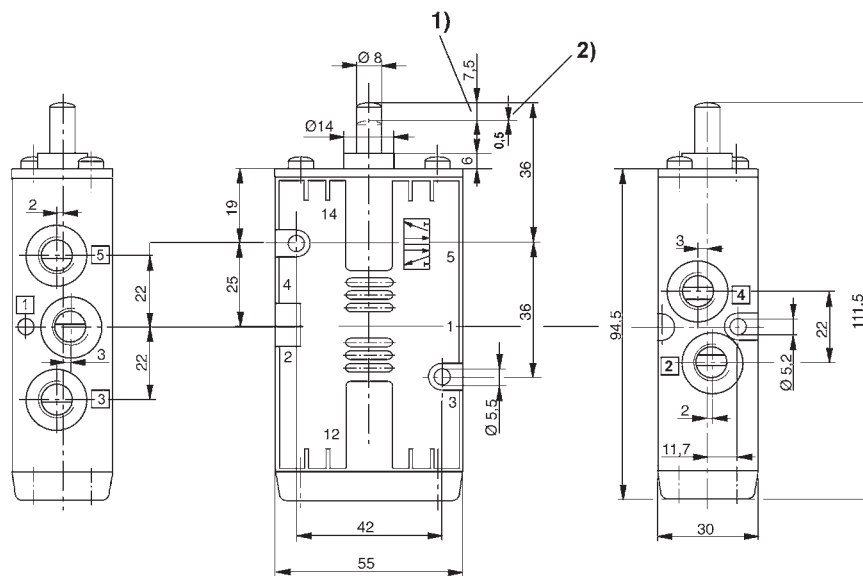
5/2-directional valve, Series CD07

► Qn= 1200 l/min ► pipe connection ► compressed air connection output: G 1/4 ► suitable for ATEX

Part No.	Material: Housing	Material: Actuating control	Weight	Fig.
			[kg]	
5634660100	Die cast zinc; Polyamide, fiber-glass reinforced	Polyoxymethylene	0.54	Fig. 6
5634669200	Die cast zinc	Polyoxymethylene	0.54	Fig. 7

Nominal flow Qn at 6 bar and $\Delta p = 1$ bar

Dimensions, Fig. 1



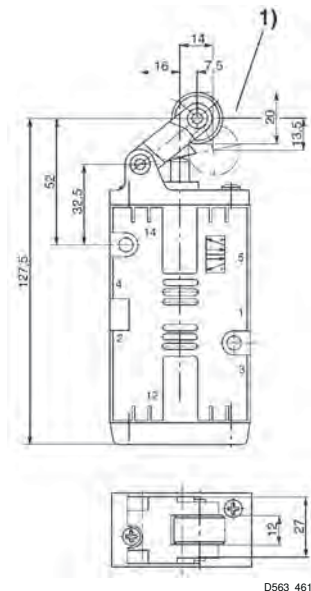
1) Stroke 2) Overstroke

Dimensions of basic valve apply to all types of actuation.

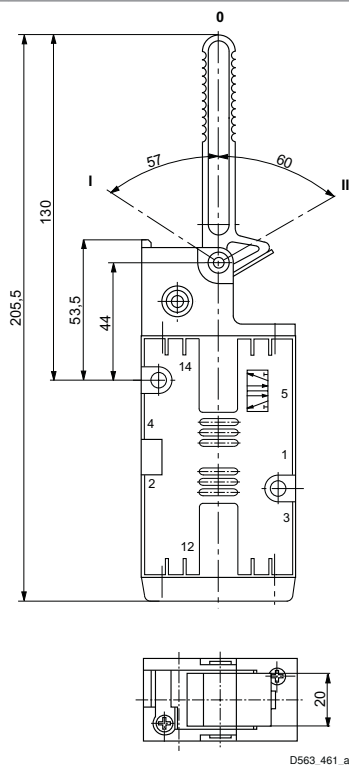
D563_460

5/2-directional valve, Series CD07

► Q_n= 1200 l/min ► pipe connection ► compressed air connection output: G 1/4 ► suitable for ATEX

Dimensions, Fig. 2


1) approach angle of rollers max. 30°

Dimensions, Fig. 3


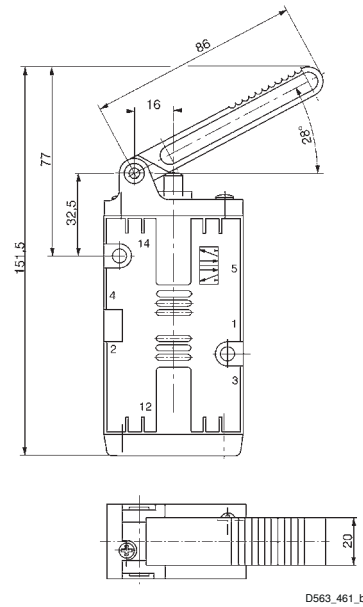
Position 0: initial position, position I: with detent; manual return, position II: automatic spring return.

Directional valves ▶ Mechanically operated

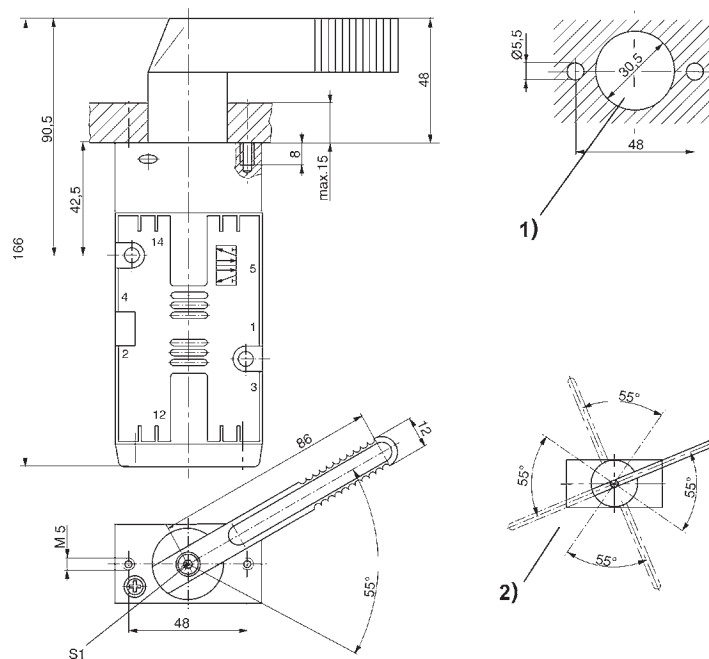
5/2-directional valve, Series CD07

▶ Qn= 1200 l/min ▶ pipe connection ▶ compressed air connection output: G 1/4 ▶ suitable for ATEX

Dimensions, Fig. 4



Dimensions, Fig. 5

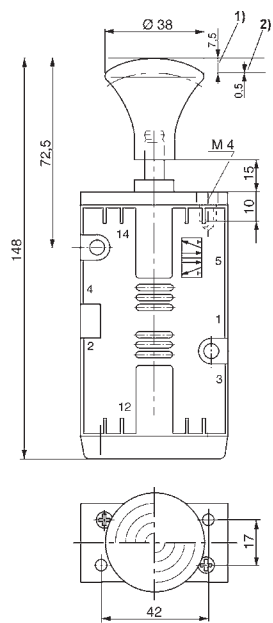


- 1) control panel installation (holes in mounting panel)
- 2) possible lever positions (basic position of hand lever adjustable in 90° steps after loosening screw "S1").

5/2-directional valve, Series CD07

► Qn= 1200 l/min ► pipe connection ► compressed air connection output: G 1/4 ► suitable for ATEX

Dimensions, Fig. 6



D563 462 a

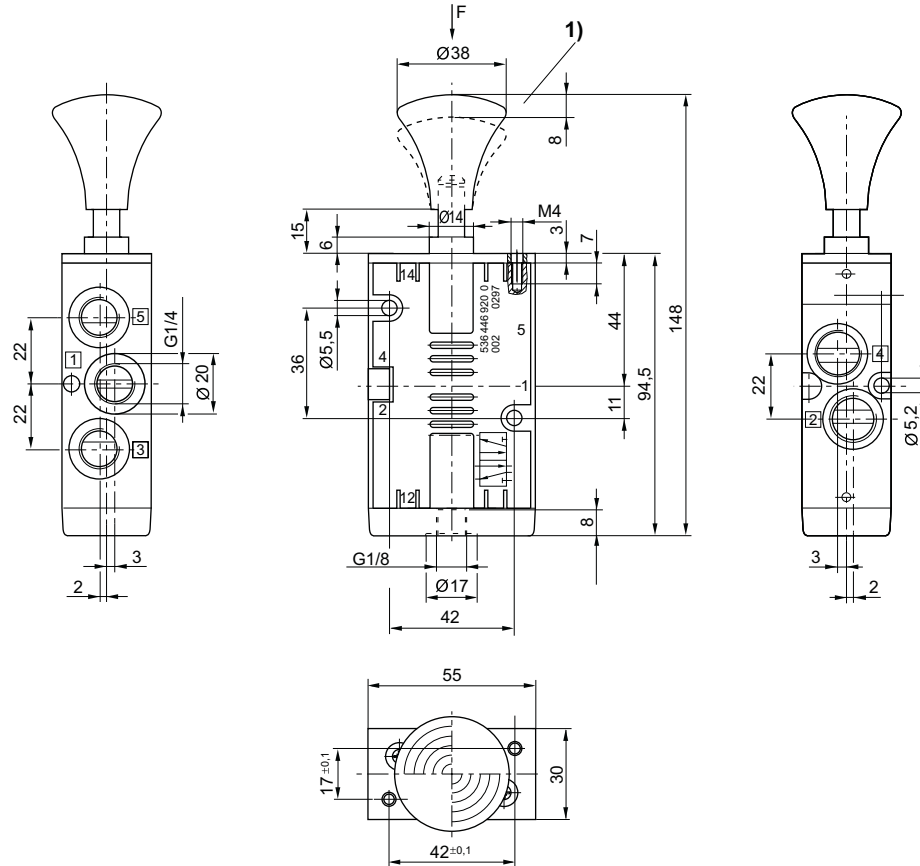
1) Stroke 2) Overstroke

Directional valves ▶ Mechanically operated

5/2-directional valve, Series CD07

▶ Qn= 1200 l/min ▶ pipe connection ▶ compressed air connection output: G 1/4 ▶ suitable for ATEX

Dimensions, Fig. 7



00135345

1) Stroke

5/2-directional valve, Series CD07

▶ Qn= 1200 l/min ▶ pipe connection ▶ compressed air connection output: G 1/4 ▶ cold-resistant ▶ suitable for ATEX



00134153

Version	Spool valve, zero overlap
Sealing principle	Soft sealing
Working pressure min./max.	-0.95 bar / 10 bar
Ambient temperature min./max.	-35 °C / +70 °C
Medium temperature min./max.	-35 °C / +70 °C
Medium	Compressed air
Max. particle size	50 µm
Oil content of compressed air	0 mg/m³ - 1 mg/m³
Compressed air connection	according to ISO 228-1

Materials:

Housing	Die cast zinc; Polyamide, fiber-glass reinforced
Seals	Acrylonitrile Butadiene Rubber; Polyurethane

	Actuating element	Compressed air connection			Qn	Actuating force Min.	Material: Actuating control	Weight	Part No.
		Input	Output	Exhaust					
					[l/min]	[N]		[kg]	
	Roller	G 1/4	G 1/4	G 1/4	1200	52	Polyoxymethylene	0.59	5634610190
	Hand lever, with detent, without detent	G 1/4	G 1/4	G 1/4	1200	26	Polyoxymethylene; Aluminum	0.62	5634630190

Part No.	Fig.
5634610190	Fig. 1
5634630190	Fig. 2

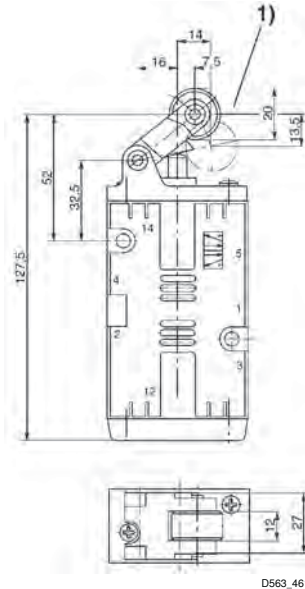
Nominal flow Qn at 6 bar and Δp = 1 bar

Directional valves ► Mechanically operated

5/2-directional valve, Series CD07

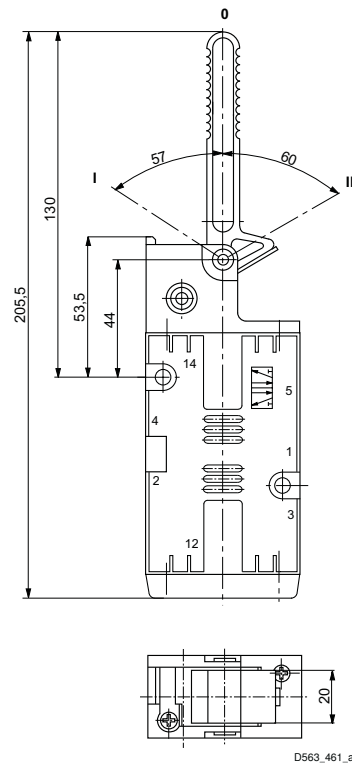
► Qn= 1200 l/min ► pipe connection ► compressed air connection output: G 1/4 ► cold-resistant ► suitable for ATEX

Dimensions, Fig. 1



1) approach angle of rollers max. 30°

Dimensions, Fig. 2



Position 0: initial position, position I: with detent; manual return, position II: automatic spring return.

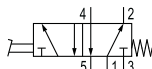
5/2-directional valve, Series CD07
► Qn= 1200 l/min ► pipe connection ► compressed air connection output: G 1/4 ► suitable for ATEX


00134154

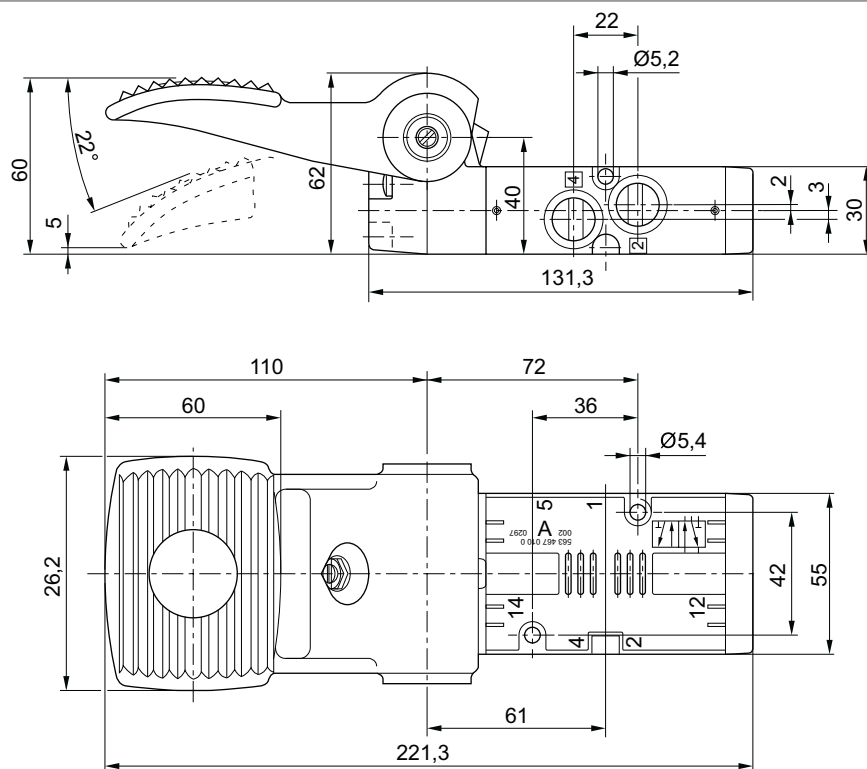
Version	Spool valve, zero overlap
Actuating element	Pedal
Sealing principle	Soft sealing
Working pressure min./max.	-0.95 bar / 10 bar
Ambient temperature min./max.	-25 °C / +80 °C
Medium temperature min./max.	-25 °C / +80 °C
Medium	Compressed air
Max. particle size	50 µm
Oil content of compressed air	0 mg/m³ - 1 mg/m³
Compressed air connection	according to ISO 228-1

Materials:

Housing	Die cast zinc; Polyamide, fiber-glass reinforced
Seals	Acrylonitrile Butadiene Rubber
Actuating element	Aluminum

	Compressed air connection			Qn	Actuating force Min.	Weight	Part No.
	Input	Output	Exhaust	[l/min]	[N]	[kg]	
	G 1/4	G 1/4	G 1/4	1200	40	0.76	5634670100

Nominal flow Qn at 6 bar and Δp = 1 bar

Dimensions


D563_467

Directional valves ▶ Mechanically operated

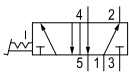
5/2-directional valve, Series CD07

▶ Qn= 1200 l/min ▶ pipe connection ▶ compressed air connection output: G 1/4 ▶ suitable for ATEX



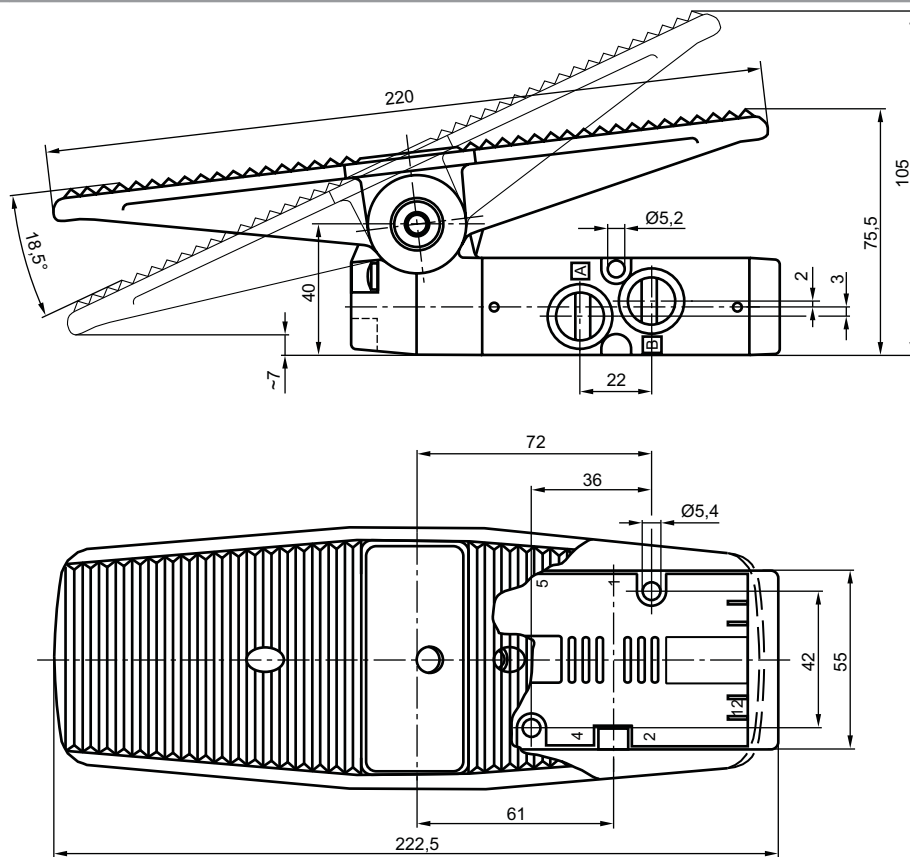
00134155

Version	Spool valve, zero overlap not lockable
Actuating element	Pedal, with detent
Sealing principle	Soft sealing
Working pressure min./max.	-0.95 bar / 10 bar
Ambient temperature min./max.	-25 °C / +80 °C
Medium temperature min./max.	-25 °C / +80 °C
Medium	Compressed air
Max. particle size	50 µm
Oil content of compressed air	0 mg/m³ - 1 mg/m³
Compressed air connection	according to ISO 228-1
Materials:	
Housing	Polyamide, fiber-glass reinforced; Die cast zinc
Seals	Acrylonitrile Butadiene Rubber
Actuating element	Aluminum

	Compressed air connection			Qn	Actuating force Min.	Weight	Part No.
	Input	Output	Exhaust				
				[l/min]	[N]	[kg]	
	G 1/4	G 1/4	G 1/4	1200	40	1.56	5634695100
Nominal flow Qn at 6 bar and Δp = 1 bar							

5/2-directional valve, Series CD07

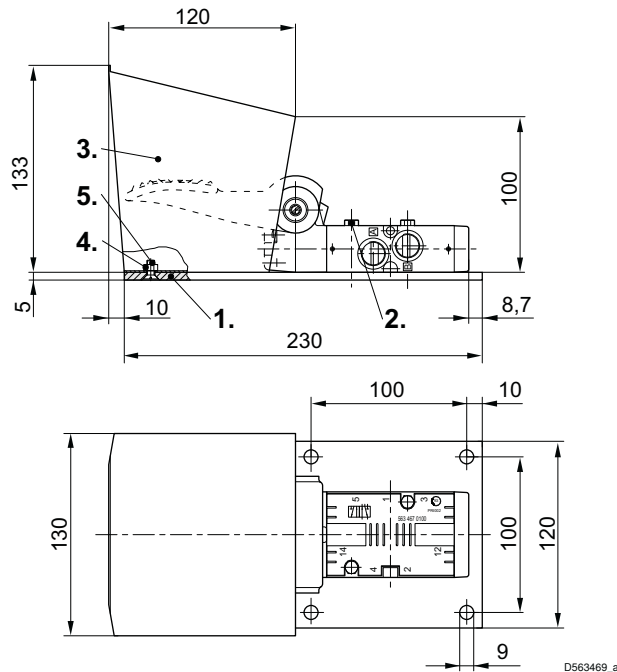
► Qn= 1200 l/min ► pipe connection ► compressed air connection output: G 1/4 ► suitable for ATEX

Dimensions


D563_469

Series CD07
Accessories

Accessories, Series CD07



- 1) Mounting plate
- 2) Hexagon screw M5x35
- 3) Protective cover
- 4) Screw M5x12 (not included in scope of delivery)
- 5) Hexagonal nut M5 (not included in the delivery contents)

Part No.	Type	Delivery quantity [Piece]								
5631171004	Mounting plate	1								
8101260304	Hexagon screw M5x35	1								
5631174514	Protective cover	1								

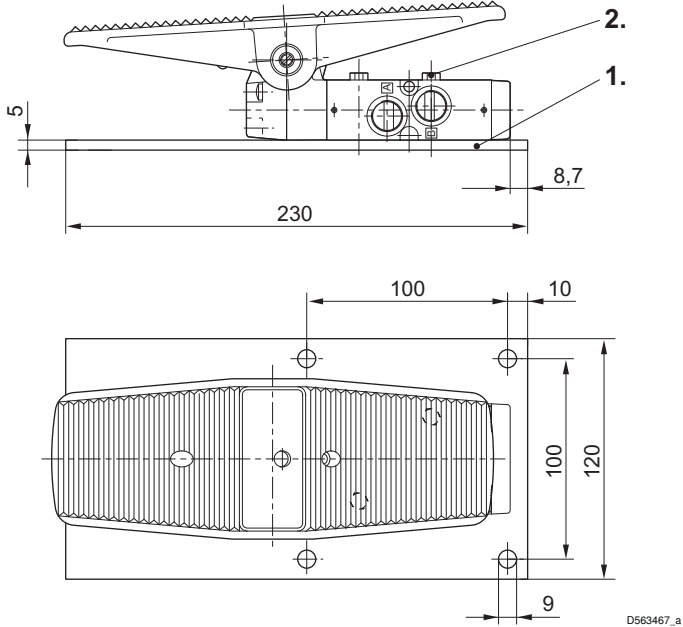
Series CD07

Accessories

Accessories, Series CD07



00134155



- 1) Mounting plate
2) Hexagon screw M5x35

Part No.	Type	Delivery quantity [Piece]								
5631171004	Mounting plate	1								
8101260304	Hexagon screw M5x35	1								

Silencers, Series SI1

► Sintered bronze



P100_060

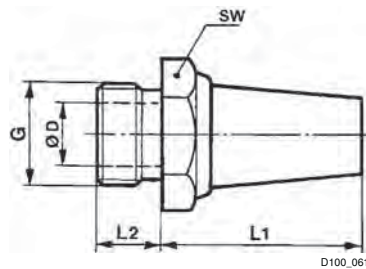
Working pressure min./max.	0 bar / 10 bar
Ambient temperature min./max.	-25 °C / +80 °C
Medium	Compressed air
Materials:	
Silencers	Sintered bronze
Thread	Brass

Directional valves ► Mechanically operated

Series CD07 Accessories

Compressed air connection	Sound pressure level	Qn	Delivery quantity	Weight	Part No.
	[dB]	[l/min]	[Piece(s)]	[kg]	
G 1/4	79	2900	10	0.02	1827000001
	-	-		0.013	R412004817

Dimensions



Part No.	Port G	SW	Ø D	L1	L2							
1827000001	G 1/4	17	8.5	25	8							
R412004817	G 1/4	16	8.5	18.7	7.6							

Sound pressure level measured at 6 bar at 1 m distance

Silencers, Series SI1 ► Stainless steel



00136335

Working pressure min./max.
Ambient temperature min./max.
Medium

0 bar / 12 bar
-20°C / +150°C
Compressed air

Materials:
Silencers
Thread

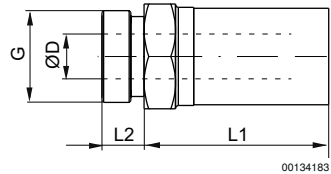
Stainless steel
Stainless steel

Compressed air connection	Sound pressure level	Qn	Delivery quantity	Weight	Part No.
	[dB]	[l/min]	[Piece(s)]	[kg]	
G 1/4	93	850	1	0.021	R412010082

Series CD07

Accessories

Dimensions



Part No.	Port G	SW	Ø D	L1	L2							
R412010082	G 1/4	16	8.6	29.5	7.5							
Sound pressure level measured at 6 bar at 1 m distance												

AVENTICS GmbH
Ulmer Straße 4
30880 Laatzen
Phone +49 511 2136-0
Fax +49 511 2136-269
www.aventics.com
info@aventics.com



Find more contact information at
www.aventics.com/contact

Only use the AVENTICS products shown in industrial applications. Read the product documentation completely and carefully before using the product. Observe the applicable regulations and laws of the respective country. When integrating the product into applications, note the system manufacturer's specifications for safe use of the product. The data specified only serve to describe the product. No statements concerning a certain condition or suitability for a certain application can be derived from our information. The information given does not release the user from the obligation of own judgment and verification. It must be remembered that the products are subject to a natural process of wear and aging.

27-12-2015

An example configuration is depicted on the title page. The delivered product may thus vary from that in the illustration. Subject to change. © AVENTICS S.à r.l. This document, as well as the data, specifications and other information set forth in it, are the exclusive property of AVENTICS S.à r.l.. It may not be reproduced or given to third parties without its consent. PDF online

Rexroth
Pneumatics